

Community Outreach

METRO LUTHERAN: Medical professionals often offer services for those in need who cannot pay. Read about Minnesota-based Children's Surgery International on Page 17 of the January issue of Metro Lutheran. Copies are available at the Welcome Center and the kiosks (one located near the library and the other near the west entrance.)

NEW LIFE FAMILY SERVICES PRESENTS: "The First Annual Laugh for Life" featuring Bill Arnold, Bob Stromberg and Michael Pearce Donley (the original cast from Triple Espresso), this will be an unforgettable evening of fun and laughter. Come expecting to enjoy a program of original work, different from the Triple Espresso show, but sure to be equally gut-splitting! Beat the winter blues with a night of laughter as you support the life-saving work of New Life Family Services. The event will take place on January 30th at Grace Church, Eden Prairie. Reserved seating tickets are \$10/ticket; group seating (20 or more) for \$8/ticket; VIP seating for \$40/ticket. VIP tickets include prime seating and an exclusive 30 minute "Meet & Greet" with the performers. The Meet & Greet takes place from 6:15 – 6:45 p.m. and consists of social time, photo opportunities and hors' d'oeuvres. A freewill offering will be taken during the event to benefit New Life Family Services. Contact Marie Anderson at (612)866-7643, ext. 169 to reserve your tickets.

CONCORDIA ACADEMY IN ROSEVILLE is now accepting applications for the 2010-2011 school year. You may find the necessary application and recommendation forms on the Prospective Student page of www.concordiaacademy.com Click on Prospective Students. You may also contact marilyn.mick@concordiaacademy.com

WINTER OPEN HOUSES AT CONCORDIA ACADEMY – ROSEVILLE:

Concordia Academy – Roseville invites interested families to an open house on one of the following days: Sunday, January 31, from 2-4 p.m., Friday, February 5 beginning at 1:00 p.m., and Friday, March 5 beginning at 1:00 p.m. Take a tour led by a student ambassador, visit classes, meet the principal, staff, and current parents. Learn how we are equipping students for lives of faith and service. CA-Roseville is located at 2400 North Dale St. in Roseville. Contact Marilyn Mick at 651-484-8429, ext. 136.

Messiah Lutheran Church
2848 County Road H2 - Mounds View, MN 55112
(763)784-1786 - www.messiah-lutheran.org

WEEK AT A GLANCE: JANUARY 24 – JANUARY 30, 2010

If you would like a printed version of our service today, copies are available on the table as you enter the Worship Center or you may ask one of the ushers for a copy.

TODAY:

7:30, 8:30*, & 11:00AM **Worship Service** - * Communion Service
9:45 AM Education Hour

MONDAY:

7:00 PM Altar Guild/Scrabble

TUESDAY:

9:00 AM Tuesday Morning Work Crew
1:30 PM Program Staff Meeting
7:30 PM AA

WEDNESDAY:

8:45 AM Prince of Peace Chapel
9:30 AM Adult Bible Study
4:45 PM Wednesday Evening Meals
5:00 PM Joyful Ringers
6:00 PM New Song/Confirmation/Senior Youth
6:30 PM Good Vibrations/Kingdom Kids
6:45 PM Wednesday Night Bible Study (Luke & Acts)
7:00 PM Messiah Singers

THURSDAY:

2:00 PM Cribbage
7:00 PM Jubilant Bells/Couples Bible Study

FRIDAY:

6:00 AM Men's Bible Study at RJ Riches

SATURDAY:

TODAY'S ORDER OF WORSHIP

7:30 & 8:30* SERVICES

Opening Hymn: "Christ Is Made the Sure Foundation" #909

Old Testament Reading: Neh. 8:1-3, 5-6, 8-10

Epistle Reading: 1 Corinthians 12:12-31a

Gospel Reading: Luke 4:16-30

Offering Hymn: "O Christ, Our True and Only Light" # 839

Sermon: "The Upside Down Life" Luke 4:14-21

8:30 Communion Hymns:

"Praise the One Who Breaks the Darkness" # 849

"Brightest and Best of the Stars of the Morning" # 400

"I Want to Walk as a Child of the Light" #411

Closing Hymn: "Lord, Dismiss Us With Your Blessing" # 924

11:00 Service

ENTIRE SERVICE DONE ON POWER POINT

Old Testament Reading: Neh. 8:1-3, 5-6, 8-10

Epistle Reading: 1 Corinthians 12:12-31a

Gospel Reading: Luke 4:16-30

Sermon: "The Upside Down Life" Luke 4:14-21

THOSE SERVING YOU TODAY:

7:30, 8:30*, & 11:00 Services:

Worship Leader & Proclaimer:	Pastor Richard Krogen
Organist:	Kay A. Knutson
Acolytes:	Dan Kroll & Seth Subiaga
	Arman Soule & Zack Olson
Ushers:	Roleene Roehl & Nikki Roehl
	Brad Brolsma, Chuck Hayes,
	John Kvitrud, Wally Schuldt
	Brady Bargman, Tom Lewnau, Alice Quiah

Worship Assistants: 7:30 Steve Gaynor 8:30 Jerry Steinhorst 11:00 Brad Brolsma

Readers: 7:30 MOPS MOM 8:30 MOPS MOM 11:00 MOPS MOM

Greeters for January 24:

7:30 Midge Heidecker – Don Rossbach

8:30 Richard & Sharon LaBounty – Shirley Beyer

11:00 Tom & Sue Relling – Sharon Dallman

Greeters for January 31:

7:30 Gerald & Grace Garner

8:30 Wanda Fonken – Herb & Rona Hanson

11:00 Jerry & Becky Oestreich – Jan Shoeman

Communion Assistants for the Month:

7:30 Chuck Tarman

8:30 Jerry Hildebrandt

11:00 Kirby & Sharon Ehrreich

Welcome Center:

7:15 – 7:30 Bob & Joanne Anderson 8:20 – 8:40 Ron & Carol Sroga

9:25 – 9:50 Audrey Brutlag 10:45 – 11:00 Keith & Phyllis Grubb

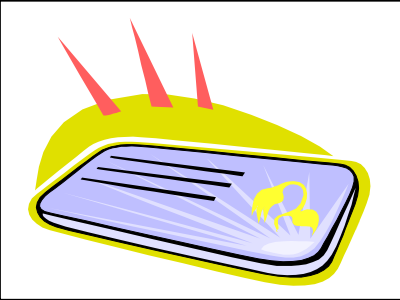
12:00 – 12:15 Lynn Radtke

YEAR END STATEMENTS FOR 2009 are available on a table by the Welcome Center. This statement covers all of your offerings for 2009 and serves as a receipt for your taxes. Please pick your envelope up as soon as possible. If you have a concern about your statement, please call Sarah Bardal at 651-633-9238 or Carol Hyatt at 763-784-1786.

THE BAZAAR IS SATURDAY, NOVEMBER 6, 2010, and will be here before we know it. We sold over 150 jars of jams, jellies and apple butter last year at the Bazaar. We need your help again this year by saving your 8 oz. (Kerr/Ball) jelly jars with the rings. Please leave them in the church kitchen marked Bazaar. If you have any questions, call Lucille K.

ALL WOMEN OF MESSIAH AND GUESTS! Join us on Tuesday, February 9 at 7:00 p.m. to hear Rob Haarsager, Executive Director of LOVE INC of NWRC (Love in the Name of Christ of NW Ramsey County) tell us of this organization and ways we can help. There will be a short meeting and then “Make Your Own Valentines”. It will be a fun evening so bring a friend and join us. Board meeting at 6:00 p.m.

WE HAVE OPPORTUNITIES TO HELP OUR NEIGHBORS



Every month we receive calls and visitors in the office looking for help with things like rent, clothing, gas, baby formula, heat bills, bus passes, diapers, groceries, prescriptions or other items. Sometimes an agency like Love INC or CEAP can meet the need. Other times we work in partnership with another organization to meet multiple needs, and

sometimes we are able to meet an immediate need on our own.

In the past year we have given more than \$500 to people IN OUR LOCAL COMMUNITY in the form of assistance with simple items such as gas and groceries. **BUT WE NEED YOUR HELP!** We are in need of gift cards in amounts from \$10-\$25 for items described above. Suggested stores would be Super America, CUB, Aldi, pharmacies, Target, Kmart, Walmart, Subway, etc. If you would like to donate a card, please record the amount on the card and hand it directly to Carol, Allison, Kay or JoElla. **MANY THANKS. The recipients of these cards are grateful for the gift!**

Welcome friends! We're glad you're here today. Whether you are a long-time member or a first-time visitor, please be sure to indicate so on one of the blue cards found in your bulletin. Please turn your blue card in during the time of the offerings. Visitors, please stop by the Welcome Center in the Gathering Space for your gift.

- **Directional Signage** is located throughout the building suspended from the ceilings. If you aren't sure which way to go, look UP!
- **THE NURSERY** is available for parents and their children three years of age and younger and is located in the hallway across from the rear of the Sanctuary.
- **Busy Bags** are filled with quiet activities for your children to use during the service. They can be found in the entryway of the Gathering Space. The busy bags and their contents can be returned to the Gathering Space after the service.
- The **Welcome Center** is located right outside the Worship Center and is filled with information about Messiah and its many activities. Feel free to ask the volunteer any questions you may have.
- **Restrooms** are on the south side of the Gathering Space.
- If you would like to receive **Holy Communion** and are unable to approach the Communion Rail, please talk to one of the worship assistants or an usher before the service and they will assist you.
- **FM 88.1** Are you experiencing difficulty hearing during the worship service? Try listening to the worship service on a FM radio tuned to 88.1 FM. We encourage you to bring a good quality FM radio with high quality ear buds, and then listen direct to the pastor and music without the distractions. FM radios are also available at the welcome center.

LEADING OUR WORSHIP this morning is **Pastor Richard Krogen**. **Messiah's Public Worship** is currently conducted and the Word proclaimed by three worship leaders, **Pastor Richard Krogen, Pastor Del Wippich** and **Pastor Philemon Ngare**. All are members of Messiah and share the public worship duties. **Kay Knutson** is our Director of Music and plans our Order of Worship. **JoElla Kath** is our church secretary and prepares our bulletin and News and Notes.

Dear Members of Messiah,

Thank you for your generosity in helping us replace Mark's guitar that was stolen this past summer from the sanctuary. It was greatly appreciated.

Sincerely, Mark & Kay K

Sunday Morning Adult Education Class Schedule

	8:30am		9:45am			
	<i>Blue Room B</i>	<i>Room 210</i>	<i>Blue Room A</i>	<i>Blue Room B</i>	<i>Room 210</i>	<i>Fireside Room</i>
1/24	<i>Study of John</i>	<i>Thru the Bible</i>	New Life Testimonials	<i>Study of John</i>	<i>Thru the Bible</i>	<i>Hearts Ablaze</i>
1/31	<i>Study of John</i>	<i>Thru the Bible</i>	GUEST SPEAKERS: Brian & Denise Walker		<i>Thru the Bible</i>	<i>Hearts Ablaze</i>
2/7	<i>Study of John</i>	<i>Thru the Bible</i>	Adoption	<i>Study of John</i>	<i>Thru the Bible</i>	<i>Hearts Ablaze</i>
2/14	<i>Study of John</i>	<i>Thru the Bible</i>		<i>Study of John</i>	<i>Thru the Bible</i>	<i>Hearts Ablaze</i>

GUEST SPEAKERS BRIAN AND DENISE WALKER will be at Messiah NEXT SUNDAY to share their powerful testimony. *Everlasting Light Ministries* was founded by Rev. Brian and Rev. Denise Walker in 1999. Brian and Denise desire to share the hope, forgiveness, and mercy of Jesus Christ, which they received, with anyone who has lost children through about abortion. Jesus Christ healed and restored their fractured, tortured lives and marriage from the devastation of three abortions. Since 1999, the Walkers have also been used by God to sensitize communities to the needs of post-abortive people. The Walkers are compassionate, articulate, and transparent public speakers who are willing to share the truth



about abortion and its real life consequences. They are often called upon to be keynote speakers at local, statewide pro-life banquets and events, and participate on the speaker's bureaus for Minnesota Concerned Citizens for Life (MCCL) and Silent No More Minnesota (SNMM). **Don't miss this class!**

WE'RE ALL ADOPTED BY OUR KING... now what about the 150 million orphans worldwide? Cindy Kruger, foster parent, adoptive parent, and branch director of Bethany Christian Services of MN will be sharing with us about the orphan crisis, orphan care, and adoption on Sunday, February 7th during the 9:45 education hour. Come learn more about the Church's call to care for these children in need. You can also visit with Cindy before and after services at the Bethany Christian Services display table. Stop by to pick up literature on orphan sponsorship, adoption, pregnancy counseling for persons facing unplanned pregnancies, and other ministries within Bethany.

THIS MORNING: In all services we will be commissioning and installing our Leadership Council members! Please take a moment between services today to greet and thank Renie A, Jeff G, Hans H, Jim K, Dave K, George K, Lynn R, and Jeff R for their service to Messiah. Also extend your thanks to Beth S, who has completed her term on the Council.



The members of Messiah MOPS want to send a special thank you to all the members of this church who help make our meetings a success. You watch our children; give us a place to meet, and so much more. **THANK YOU SO MUCH!!** We couldn't meet were it not for you, and for that, we are so very grateful. Thank you so very much.

NEW YEAR'S RESOLUTION:

TRANSFORM YOUR MIND so that you will understand God's good, pleasing, and perfect will (Rom 12:2). **Together as the body of Christ at Messiah, let's read through the Bible in 2010!** At 8:30 and 9:45, Ron and Melea B and others will be facilitating weekly discussions based on the previous week's daily readings. Other small groups may choose to meet at other times throughout the week for those already in a Sunday Bible class. Think of how we can truly impact the world for God if together we are literally "on the same page!" *Today we will be discussing Genesis 25-40 and Matthew 3-8-11.* If you have not read these already, please find the reading schedule for the week of January 10 (below), read it, and join us next week!

Read Through the Bible Reading Schedule for the week of January 24, 2010 (to be discussed in small groups on January 31). *Before reading each day, ask the Holy Spirit to open your mind (to set your heart ablaze!) to understand the words on the page. Then jot down any questions or insights that come to mind and bring those "jots" to your group to share.*

- Sunday, January 24: Exodus 9-11, Matthew 15:21-39
- Monday, Jan 25: Exodus 12-13, Matthew 16
- Tuesday, Jan 26: Exodus 14-15, Matthew 17
- Wednesday, Jan 27: Exodus 16-18, Matthew 18:1-20
- Thursday, Jan 28: Exodus 19-20, Matthew 18:21-35
- Friday, Jan 29: Exodus 21-22, Matthew 19
- Saturday, Jan 30: Exodus 23-24, Matthew 20:1-6

NEW MEMBER CLASS – “SETTING HEARTS ABLAZE!” It’s not too late – Today is our first lesson. The class is from 9:45 to 10:45 AM Sundays and located in the Fireside Room. The class is for ALL those seeking membership through transfer from another church, and for those who are new or renewing their Christian faith. We also encourage long time members wishing to review the core of their Christian faith to attend this class. This is not a review of Luther’s Catechism, but designed to give us the tools that strengthen our faith. The class runs through April 18th and we will welcome the new members on April 25th.

PASTORAL CARE is provided by Pastor Krogen and Pastor Wippich along with the assistance of other area clergy as needed. If you need pastoral assistance please call the church office at **763-784-1786**. If no one is available to take your call, please leave a message for one of the pastors. Someone will get back to you as soon as possible. If there is a **pastoral emergency** and no one is available to take your call, follow the instructions given on the voice mail system; then when prompted, leave a message with a phone number *where you can be reached*. The **Emergency Pastoral Care Response System** will page the “On Call” pastor as soon as you hang up.

Life Quote

"God has brought so many broken and hurting to us in ways we can't even comprehend. We continue to proclaim Christ's healing, and serve the needs of women and men who have experienced the loss of a child through an abortion.

We know that God is in control,
we also know that He uses people to do His work."

Grace Kern, director of Word of Hope (888-217-8679)

www.lutheransforlife.org

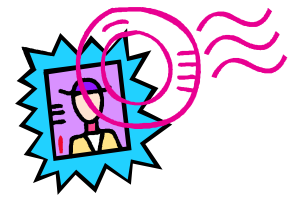


LOVE IN THE NAME OF CHRIST OF NORTHWEST RAMSEY COUNTY

is an important ministry of OUR local churches to people in OUR community. To learn more about this organization and what we have been doing through it the past year, please go to

<http://www.firstgiving.com/loveincnwrc>

SANCTITY OF LIFE MONTH We will be collecting donations for New Life Family Services in January. This can be in the form of “Forever” postage stamps or cash donations. Make a note of New Life on your check. Stamps can be dropped off in the office area. **IN HONOR OF ADOPTION**



we will be collecting donations towards our “Orphan Ministry Fund” at Messiah. Again, make a note on your check to designate your donation. We will celebrate adoption on February 7 in all of our worship services and you will have the chance to honor a loved one on a special **Adoption Wall** in the gathering space.

STEPHEN MINISTERS, we have a meeting on February 1 at 6:30 for some great education and then Supervision at 7:30.

Lorraine has Devotion Rona has snack

ARTICLES FOR MONTHLY NEWSLETTERS – Due to the deadline imposed by Liturgical Publishing with regards to receiving the monthly newsletter back after publication, we will be strictly adhering to the 10th of the month deadline for articles for the newsletter.

FOOD SHELF DONATIONS – During the month of January we are collecting non-perishable items for the CEAP Food Shelf. Please leave your donations in the bin marked Food Shelf or you can make a monetary donation by marking “Food Shelf” on your offering envelope. The items they are in most need of currently are:

Peanut Butter	Beef Stew	Tuna
Spaghetti Sauce	Noodles	Boxed Dinners
Cereal		

Please leave your donations in the bin marked Food Shelf or you can make a monetary donation by marking “Food Shelf” on your offering envelope.

OFFERINGS: General Fund: \$11,908 Mortgage Fund: \$4,479 Missions: \$20 (5.0% of General Fund) \$595 Weekly Fund Needs: \$12,355 Weekly Mortgage Fund Needs: \$4,053

ATTENDANCE: Sunday: 379 Sunday School: 52

Wednesday Evening Meals

January 27, 2010

4:45 – 6:15 PM

Meatball Sandwiches, Salad,
Chips and Dessert

Donations Accepted

IS YOUR GROUP STILL THINKING ABOUT DOING A FUNDRAISER by providing a meal during the Lenten season? Currently, there are only 2 Wednesday's left to pick from and they are February 24th and March 17th. The sign up sheet is posted just inside the kitchen doorway. We encourage you to sign your group up today while you still have a choice. If you have questions, you may contact Carol in the church office. **FMF**-One of our recent guests, Giovannia and her family, have recently moved into successful housing after 110 days in the FMF shelter. She and her family are very excited and extremely thankful for the congregations who have helped her during this time. I will put her letter in the monthly newsletter. FMF has supplied them with many things but they still need a futon, daybed frame, sofa, small kitchen table and chair set, shower curtains and Purex laundry soap.

AAHHHHHHhhhhhhh!! The HoRROR!!

Please help avoid this stunned reaction in our ministry leaders here at Messiah! We have MANY many MANY groups using the rooms here in the church *throughout the week*. When your group has finished using a room, please consult the set-up chart on the wall and be sure to leave the room in the standard set-up. Your sensitivity and care for the next group will be *greatly appreciated* by their leaders (who carry the greatest burden when a room needs rearranging) and the staff. Contact Carol if you have any questions about room set-up or usage. Thank you!



CALL COMMITTEE UPDATE

(submitted on 01/20/10)

On 01/14/10, the CC met to review all the Personal Information Files and the Self-Evaluation Tools for 47 call candidates. After much discussion and consideration, we decided to send questionnaires to 16 of those candidates. The questionnaire will be sent out on 1/21/10.

We have asked the candidates to return the questionnaire by 2/7/10.

The CC will next meet on 2/16/10 to review the questionnaires and decide on the candidates that we would like to interview.

Again, please remember, these names are confidential. In order to respect the privacy of the candidate and his church, the CC will not be able to share any names.

Please continue to keep us in your prayers.

Please address questions, comments to any member of the CC:
Matt K, Jeff F, Jeni A, Carl S,
Marian E, Wayne L, Phyllis G

CALL COMMITTEE UPDATE

(submitted on 01/20/10)

On 01/14/10, the CC met to review all the Personal Information Files and the Self-Evaluation Tools for 47 call candidates. After much discussion and consideration, we decided to send questionnaires to 16 of those candidates. The questionnaire will be sent out on 1/21/10.

We have asked the candidates to return the questionnaire by 2/7/10.

The CC will next meet on 2/16/10 to review the questionnaires and decide on the candidates that we would like to interview.

Again, please remember, these names are confidential. In order to respect the privacy of the candidate and his church, the CC will not be able to share any names.

Please continue to keep us in your prayers.

Please address questions, comments to any member of the CC:
Matt Kaufenberg, Jeff Fey, Jeni Abel, Carl Schwanbeck,
Marian Edelen, Wayne Leverkus, Phyllis Grubb