

## Community Outreach

**METRO LUTHERAN:** The Rev. Morris Wee, pastor of Advent Lutheran Church in Maple Grove, Minnesota, received an interesting phone call from a formerly-homeless family who had received services from Advent. They requested that the pastor come to their house and perform a wedding ceremony. See page 3 of the February issue of Metro Lutheran to find out how Wee and the rest of Advent Lutheran responded to this request. Copies are available at the Welcome Center and the kiosks (one located near the library and the other near the west entrance.)

**CONCORDIA ACADEMY IN ROSEVILLE** is now accepting applications for the 2010-2011 school year. You may find the necessary application and recommendation forms on the Prospective Student page of [www.concordiaacademy.com](http://www.concordiaacademy.com). Click on Prospective Students. You may also contact [marilyn.mick@concordiaacademy.com](mailto:marilyn.mick@concordiaacademy.com)

### **WINTER OPEN HOUSES AT CONCORDIA ACADEMY – ROSEVILLE:**

Concordia Academy – Roseville invites interested families to an open house on one of the following days: Sunday, January 31, from 2-4 p.m., Friday, February 5 beginning at 1:00 p.m., and Friday, March 5 beginning at 1:00 p.m. Take a tour led by a student ambassador, visit classes, meet the principal, staff, and current parents. Learn how we are equipping students for lives of faith and service. CA-Roseville is located at 2400 North Dale St. in Roseville. Contact Marilyn Mick at 651-484-8429, ext. 136.

**MARDI GRAS SERVICE AND NEW ORLEANS DINNER:** The community is cordially invited to attend the annual Mardi Gras service and New Orleans dinner at St. Matthew Lutheran Church (4101 Washington Street NE, Columbia Heights) on Sunday, February 14. The service begins at 10:45 a.m. with the dinner following immediately afterwards in the church's fellowship hall. Members of the Dixiedores Dixieland Band are featured musicians for the event. Tickets for the dinner are \$8 and are available through February 8<sup>th</sup> by calling the church office at 763-788-9427. St. Matthew is handicap accessible.

**Messiah Lutheran Church**  
2848 County Road H2 - Mounds View, MN 55112  
(763)784-1786 - [www.messiah-lutheran.org](http://www.messiah-lutheran.org)

### **WEEK AT A GLANCE: JANUARY 31 – FEBRUARY 6, 2010**

If you would like a printed version of our service today, copies are available on the table as you enter the Worship Center or you may ask one of the ushers for a copy.

#### **TODAY:**

**7:30, 8:30, & 11:00AM**      **Worship Service** - \* Communion Service  
**9:45 AM**      Education Hour

#### **MONDAY: REGISTRATION BEGINS FOR FALL PRESCHOOL**

**6:30 PM**      Stephen Ministers (Cont. Ed.)  
**7:00 PM**      LC (Shepherding)  
**7:30 PM**      Stephen Ministers (Supervision)

#### **TUESDAY:**

**9:00 AM**      Tuesday Morning Work Crew  
**1:30 PM**      Program Staff Meeting  
**7:30 PM**      AA

#### **WEDNESDAY:**

**8:45 AM**      Prince of Peace Chapel  
**9:30 AM**      Messiah Seniors  
**4:45 PM**      Wednesday Evening Meals  
**5:00 PM**      Joyful Ringers  
**6:00 PM**      New Song/Confirmation/Senior Youth  
**6:30 PM**      Good Vibrations/Kingdom Kids  
**6:45 PM**      Wednesday Night Bible Study (Luke & Acts)  
**7:00 PM**      Messiah Singers

#### **THURSDAY:**

**2:00 PM**      Cribbage  
**7:00 PM**      Jubilant Bells/Couples Bible Study

#### **FRIDAY:**

**6:00 AM**      Men's Bible Study at RJ Riches

#### **SATURDAY:**

## TODAY'S ORDER OF WORSHIP

### 7:30 & 8:30 SERVICES

Opening Hymn: "Creator Spirit, by Whose Aid"	#500
Hymn of Praise: "Holy, Holy, Holy"	#507
Old Testament Reading: Jeremiah 1:4-10	
Epistle Reading: 1 Corinthians. 12:31 – 13:13	
Gospel Reading: Luke 4:31-44	
Offering Hymn: "I Want to Walk as a Child of the Light"	#411
Sermon: "Speaking Up for the Speechless" Proverbs 31:8	
Closing Hymn: "Praise My Soul, the King of Heaven"	#793

### 11:00 Service

#### ENTIRE SERVICE DONE ON POWER POINT

Old Testament Reading: Jeremiah 1:4-10
Epistle Reading: 1 Corinthians. 12:31 – 13:13
Gospel Reading: Luke 4:31-44
Sermon: "Speaking Up for the Speechless" Proverbs 31:8

## THOSE SERVING YOU TODAY:

### 7:30, 8:30, & 11:00 Services:

Worship Leader & Proclaimer	Pastor Richard Krogen
Organist:	Kay A. Knutson
Acolytes: 8:30	Shelby Hammer & Gabrielle Fey
11:00	Allison Aabel & Sarah Tokos
Ushers: 7:30	Roleene Roehl & Nikki Roehl
8:30	Brad Brolsma, Chuck Hayes, John Kvitrud, Wally Schuldt
11:00	Brady Bargman, Tom Lewnau, Alice Quiah

Worship Assistants: 7:30 Steve Gaynor 8:30 Jerry Steinhorst 11:00 Brad Brolsma

Readers: 7:30 Lloyd Kosbab 8:30 Jane Luedtke 11:00 Denise Rust

### Greeters for January 31:

7:30 Gerald and Grace Garner  
8:30 Wanda Fonken – Herb & Rona Hanson  
11:00 Jerry & Becky Oestreich – Jan Shoeman

### Greeters for February 7:

7:30 Frank & Carol Slaker  
8:30 Chet & Arlene Ewer – Mary Brisse  
11:00 Mike & Dawn Hodges – Carl Schwanbeck

### Communion Assistants for the Month:

7:30 Chuck Tarman 8:30 Jerry Hildebrandt  
11:00 Kirby & Sharon Ehrreich

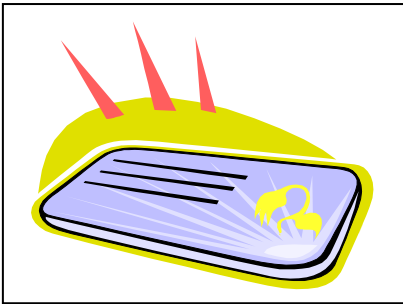
### Welcome Center:

7:15 – 7:30 Jim & Joyce Bukosky 8:20 – 8:40 Don & Marge Eggers  
9:25 – 9:50 Jo Norell 10:45 – 11:00 Don Hodges  
12:00 – 12:15 Nancy Clark

**YEAR END STATEMENTS FOR 2009** are available on a table by the Welcome Center. This statement covers all of your offerings for 2009 and serves as a receipt for your taxes. Please pick your envelope up as soon as possible. If you have a concern about your statement, please call Sarah B or Carol Hyatt at 763-784-1786.

**ALL WOMEN OF MESSIAH AND GUESTS!** Join us on Tuesday, February 9 at 7:00 p.m. to hear Rob Haarsager, Executive Director of LOVE INC of NWRC (Love in the Name of Christ of NW Ramsey County) tell us of this organization and ways we can help. There will be a short meeting and then "Make Your Own Valentines". It will be a fun evening so bring a friend and join us. Board meeting at 6:00 p.m.

### **WE HAVE OPPORTUNITIES TO HELP OUR NEIGHBORS**



Every month we receive calls and visitors in the office looking for help with things like rent, clothing, gas, baby formula, heat bills, bus passes, diapers, groceries, prescriptions or other items. Sometimes an agency like Love INC or CEAP can meet the need. Other times we work in partnership with another organization to meet multiple needs, and

sometimes we are able to meet an immediate need on our own.

In the past year we have given more than \$500 to people IN OUR LOCAL COMMUNITY in the form of assistance with simple items such as gas and groceries. **BUT WE NEED YOUR HELP!** We are in need of gift cards in amounts from \$10-\$25 for items described above. Suggested stores would be Super America, CUB, Aldi, pharmacies, Target, Kmart, Walmart, Subway, etc. If you would like to donate a card, please record the amount on the card and hand it directly to Carol, Allison, Kay or JoElla. MANY THANKS. ***The recipients of these cards are grateful for the gift!***

**GOT A QUESTION ABOUT THE LCMS?** The LCMS Church Information Center is just a call or click away. Call 888-843-5267. This toll free number connects callers to real live people who will help you find information. Click them: [infocenter@lcms.org](mailto:infocenter@lcms.org) You can read them via email to ask your question and get an answer.

### *News & Notes – January 31, 2010*

**Welcome friends! We're glad you're here today. Whether you are a long-time member or a first-time visitor, please be sure to indicate so on one of the blue cards found in your bulletin. Please turn your blue card in during the time of the offerings. Visitors, please stop by the Welcome Center in the Gathering Space for your gift.**

- **Directional Signage** is located throughout the building suspended from the ceilings. If you aren't sure which way to go, look UP!
- **THE NURSERY** is available for parents and their children three years of age and younger and is located in the hallway across from the rear of the Sanctuary.
- **Busy Bags** are filled with quiet activities for your children to use during the service. They can be found in the entryway of the Gathering Space. The busy bags and their contents can be returned to the Gathering Space after the service.
- The **Welcome Center** is located right outside the Worship Center and is filled with information about Messiah and its many activities. Feel free to ask the volunteer any questions you may have.
- **Restrooms** are on the south side of the Gathering Space.
- If you would like to receive **Holy Communion** and are unable to approach the Communion Rail, please talk to one of the worship assistants or an usher before the service and they will assist you.
- **FM 88.1** Are you experiencing difficulty hearing during the worship service? Try listening to the worship service on a FM radio tuned to 88.1 FM. We encourage you to bring a good quality FM radio with high quality ear buds, and then listen direct to the pastor and music without the distractions. FM radios are also available at the welcome center.

**LEADING OUR WORSHIP** this morning is **Pastor Richard Krogen**. **Messiah's Public Worship** is currently conducted and the Word proclaimed by three worship leaders, **Pastor Richard Krogen, Pastor Del Wippich** and **Pastor Philemon Ngare**. All are members of Messiah and share the public worship duties. **Kay Knutson** is our Director of Music and plans our Order of Worship. **JoElla Kath** is our church secretary and prepares our bulletin and News and Notes.

**FLOWERS FOR SANCTITY OF LIFE SUNDAY:** Each of the 50 flowers below the cross stand for 1 million babies that have lost their lives to abortion in this country since 1973. We honor their memory today. We also pray for healing for the mothers and fathers that have been affected by abortion.

## Sunday Morning Adult Education Class Schedule

	8:30am		9:45am			
	Blue Room B	Room 210	Blue Room A	Blue Room B	Room 210	Fireside Room
1/31	Study of John	Thru the Bible	<b>GUEST SPEAKERS: Brian &amp; Denise Walker</b>		Thru the Bible	Hearts Ablaze
2/7	Study of John	Thru the Bible	<b>Adoption</b>	Study of John	Thru the Bible	Hearts Ablaze
2/14	Study of John	Thru the Bible		Study of John	Thru the Bible	Hearts Ablaze
2/21	Study of John	Thru the Bible	<b>Biotechnology: Pandora's Box?</b>	Study of John	Thru the Bible	Hearts Ablaze

### **TODAY GUEST SPEAKERS BRIAN AND DENISE WALKER**

will share their powerful testimony. *Everlasting Light Ministries* was founded by Rev.



Brian and Rev. Denise Walker in 1999. Brian and Denise desire to share the hope, forgiveness, and mercy of Jesus Christ, which they received, with anyone who has lost children through about abortion. Jesus Christ healed and restored their fractured, tortured lives and marriage from the devastation of three abortions. Since 1999, the Walkers have also been used by God to sensitize communities to the needs of post-abortive people. The Walkers are compassionate, articulate, and transparent public speakers who are willing to share the truth about abortion and its real life

consequences. They are often called upon to be keynote speakers at local, statewide pro-life banquets and events, and participate on the speaker's bureaus for Minnesota Concerned Citizens for Life (MCCL) and Silent No More Minnesota (SNMM). **Don't miss this class!**

**WE'RE ALL ADOPTED BY OUR KING...** now what about the 150 million orphans worldwide? Cindy Kruger, foster parent, adoptive parent, and branch director of Bethany Christian Services of MN will be sharing with us about the orphan crisis, orphan care, and adoption on Sunday, February 7th during the 9:45 education hour. Come learn more about the Church's call to care for these children in need. You can also visit with Cindy before and after services at the Bethany Christian Services display table. Stop by to pick up literature on orphan sponsorship, adoption, pregnancy counseling for persons facing unplanned pregnancies, and other ministries within Bethany.

### **Biotechnology: Have We Opened Pandora's Box?**

Stem cell research today goes far beyond the lab and continues to have far-reaching effects in many other scientific and medical fields. Come and hear Marie Larson from Human Life Alliance share a brief overview on stem cell basics and then delve into the biotechnology surrounding stem cell research. You may be surprised how it impacts our society's views on women, human dignity, the family and the individual. Marie will be here February 21 at 9:45am. [www.humanlife.org](http://www.humanlife.org)

### **NEW YEAR'S RESOLUTION:**

**TRANSFORM YOUR MIND** so that you will understand God's good, pleasing, and perfect will (Rom 12:2). **Together as the body of Christ at Messiah, let's read through the Bible in 2010!** At 8:30 and 9:45, Ron and Melea B and others will be facilitating weekly discussions based on the previous week's daily readings. Other small groups may choose to meet at other times throughout the week for those already in a Sunday Bible class. Think of how we can truly impact the world for God if together we are literally "on the same page!" Today we will be discussing Exodus 9-24 and Matthew 20:17-34.

**Read Through the Bible Reading Schedule for the week of January 31, 2010** (to be discussed in small groups on February 7). *Before reading each day, ask the Holy Spirit to open your mind (to set your heart ablaze!) to understand the words on the page. Then jot down any questions or insights that come to mind and bring those "jots" to your group to share.*

Sunday, Jan. 31: Exodus 25-26, Matthew 20:17-34

Monday, Feb. 1: Exodus 27-28, Matthew 21:1-22

Tuesday, Feb. 2: Exodus 29-30, Matthew 21:36-46

Wednesday, Feb. 3: Exodus 31-33, Matthew 22:1-22

Thursday, Feb. 4: Exodus 34-35, Matthew 22:36-46

Friday, Feb. 5: Exodus 36-38, Matthew 23:1-22

Saturday, Feb.6: Exodus 39-40, Matthew 23:23-39

**NEW MEMBER CLASS – "SETTING HEARTS ABLAZE!"** It's not too late – Today is only our second lesson. The class is from 9:45 to 10:45 AM Sundays and located in the Fireside Room. The class is for ALL those seeking membership through transfer from another church, and for those who are new or renewing their Christian faith. We also encourage long time members wishing to review the core of their Christian faith to attend this class. This is not a review of Luther's Catechism, but designed to give us the tools that strengthen our faith. The class runs through April 18<sup>th</sup> and we will welcome the new members on April 25<sup>th</sup>.

**MESSIAH SENIORS** will meet on Wednesday, February 3 at 9:30 a.m. The program will be games and fellowship. Lunch will be spaghetti. Seniors are welcome to join us.

## Life Quote

"Maybe you've had an abortion and don't think that God can ever forgive you. You're wrong. Jesus suffered on the cross for ALL your sins and all MY sins. Pray to the Lord and ask for

His forgiveness (Colossians 2:13)."

*Kay L. Meyer, director of development  
for Lutherans For Life This "Life Quote"*

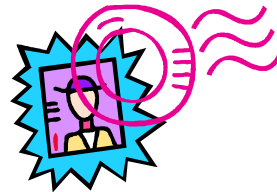
**is from Lutherans For Life e.org.**

[www.lutheransforlife.org](http://www.lutheransforlife.org)

**STEPHEN MINISTERS**, we have a meeting on February 1 at 6:30 for some great education and then Supervision at 7:30.

Lorraine has Devotion      Rona has snack

**SANCTITY OF LIFE MONTH** We will be collecting donations for New Life Family Services in January. This can be in the form of "Forever" postage stamps or cash donations. Make a note of New Life on your check. Stamps can be dropped off in the office area. **IN HONOR OF ADOPTION** we will be collecting donations towards our "Orphan Ministry Fund" at Messiah. Again, make a note on your check to designate your donation. We will celebrate adoption on February 7 in all of our worship services and you will have the chance to honor a loved one on a special *Adoption Wall* in the gathering space.



**FOOD SHELF DONATIONS** – During the month of January we are collecting non-perishable items for the CEAP Food Shelf. Please leave your donations in the bin marked Food Shelf or you can make a monetary donation by marking "Food Shelf" on your offering envelope. The items they are in most need of currently are:

Peanut Butter	Beef Stew	Tuna
Spaghetti Sauce	Noodles	Boxed Dinners
Cereal		

Please leave your donations in the bin marked Food Shelf or you can make a monetary donation by marking "Food Shelf" on your offering envelope.

**SMALL GROUPS – ABLAZE:** The goal of the Missouri Synod Ablaze program is to reach out to those who do not know Christ. Part of that program is to educate those of us who do know Christ on how to reach out to others.

We encourage all small groups to continue their fellowship and education towards that end.

We have started a library of group educational material to help accomplish this. Currently there are three new offerings for small groups:

1. "Just Walk Across the Room"
2. "How to Share Christ Confidently"
3. "Becoming a Roman 12 Christian"

These group materials will be located in the library.

Small group studies have been very beneficial to learn about God's work and to become better friends with other members of Messiah. If you currently do not belong to a small group but would like to, or have any questions on the study material please contact; Renie E, Ron B, Steve G, Rich L or Rob S

*Dear Members of Messiah,*

*Thank you for your generosity in helping us replace Mark's guitar that was stolen this past summer from the sanctuary. It was greatly appreciated.*

*Sincerely, Mark & Kay Knutson*

**OFFERINGS: General Fund: \$7,889 Mortgage Fund: \$2,497 Missions: \$30 (5.0% of General Fund) \$394** Weekly Fund Needs: \$12,355 Weekly Mortgage Fund Needs: \$4,053

**ATTENDANCE: Sunday: 363 Sunday School: 60**



**MESSIAH BOOK CLUB'S SELECTION FOR FEBRUARY** is

"Class Action" by Clara Bingham and Laura Gansler. This is the true story of Lois Jenson who was among the first women hired to work at a northern Minnesota iron mine. Conditions for women were horrible and Lois eventually found the courage to file a complaint against the company and eventually won, setting a legal milestone that improved working conditions for American women. Extra copies of the book are available. Contact Audrey B if you are interested. We meet at 2:00 on the third Thursday of each month in the CrossRoads area. Come join us!

**FMF**-One of our recent guests, Giovannia and her family, have recently moved into successful housing after 110 days in the FMF shelter. She and her family are very excited and extremely thankful for the congregations who have helped her during this time. I will put her letter in the monthly newsletter. FMF has supplied them with many things but they still need a futon, daybed frame, sofa, small kitchen table and chair set, shower curtains and Purex laundry soap.

**DAFFODIL DAYS!** 3<sup>rd</sup> year confirmands will be taking your orders for bunches of daffodils and other items. Orders will be taken on Sunday, February 7 and February 14. Flowers will be available for pick up on **Sunday, March 21**. Questions! Contact Lynn R.

**IS YOUR GROUP STILL THINKING ABOUT DOING A FUNDRAISER** by providing a meal during the Lenten season? Currently, there are only 2 Wednesday's left to pick from and they are February 24<sup>th</sup> and March 17<sup>th</sup>. The sign up sheet is posted just inside the kitchen doorway. We encourage you to sign your group up today while you still have a choice. If you have questions, you may contact Carol in the church office.

### **Wednesday Evening Meals**

**February 3, 2010**

**4:45 – 6:15 PM**

**Scalloped Potatoes & Ham,  
Hot Vegetable and Dessert**

*\*\*\*Donations Accepted\*\*\**

### **SENIOR YOUTH UPDATE**

**Last week:** “Let’s Go” We went sledding at Keys Park in Columbia Heights and played a bit of broom ball.

**This Week:** “Let’s Do.” Service project

### **Sunday Youth Bible Study**

We are finishing up our “*Secret Believers*” book study. Please make sure to come prepared again this morning and bring your books. I will be collecting them from everyone.

### **Upcoming Events:**

**Feb. 5-6<sup>th</sup> Acquire the Fire** - More than great worship. More than a great concert. More than great talks about God. It is 27 hrs set apart to give your teens a life transforming experience with Christ. Cost \$57. Contact Melea Bardal or Becky Kunz if you are interested in attending this year.

**Monday Feb. 15<sup>th</sup> Interfaith Youth Service Day.** (Students are out of school that day) Come join other teens from around the Twin Cities in an Interfaith Day of Service. It is held in Saint Paul. We will be taking a van for the event so space is limited. Please contact Becky Kunz for more detail or to RSVP.

**Wed. Feb. 17<sup>th</sup> Haiti Fundraiser** - Messiah Sr. Youth will be hosting the first Lenten Supper of this year. There will be a bake sale and dinner. All proceeds will go directly to help Haiti. Please join us and help support the relief efforts. Please contact Becky Kunz to donate baked goods for the sale. (763) 717-2824 or [bkunz@messiah-lutheran.org](mailto:bkunz@messiah-lutheran.org)

**Teenserve 2010 Dates: June 27<sup>th</sup>-July 3<sup>rd</sup> New London, WI.** Our youth will attend our 13<sup>th</sup> year participating in this wonderful short term mission trip. More details to follow soon. Cost is \$399 most of our students raise the entire amount, so please don't let the cost stop you from serving in Christ name.

## **CALL COMMITTEE UPDATE**

(submitted on 01/20/10)

On 01/14/10, the CC met to review all the Personal Information Files and the Self-Evaluation Tools for 47 call candidates. After much discussion and consideration, we decided to send questionnaires to 16 of those candidates. The questionnaire will be sent out on 1/21/10.

We have asked the candidates to return the questionnaire by 2/7/10.

The CC will next meet on 2/16/10 to review the questionnaires and decide on the candidates that we would like to interview.

Again, please remember, these names are confidential. In order to respect the privacy of the candidate and his church, the CC will not be able to share any names.

Please continue to keep us in your prayers.

Please address questions, comments to any member of the CC:  
Matt K, Jeff F, Jeni A, Carl S, Marian E, Wayne L, Phyllis G