

Community Outreach

METRO LUTHERAN: Metro Lutheran has arrived! The Church of the Lutheran Confession, a Lutheran church body with about 75 congregations across the country and headquartered in Eau Claire, Wisconsin, is celebrating its 50th anniversary in 2010. Find out more on page 5 of the July issue of Metro Lutheran. Copies are available at the Welcome Center and the kiosks (one located near the library and the other near the west entrance.)

CHRISTIAN MUSIC RADIO STATIONS in the Twin Cities - when you need a positive boost to your day!!

KTIS 98.5 FM - contemporary worship

Air1 Radio 97.7 (Coon Rapids-Maple Grove), 102.5 (Minneapolis-Edina), 92.1 (St. Paul) - pop/rock mix

KLOVE 93.3 (Minneapolis), 92.9 (St. Paul) - family friendly contemporary pop/worship

WWW.RadioU.com - online stream featuring rock, punk, hardcore, hip-hop/fusion and goofy DJs with a serious message (target audience: boys aged 10-24)

KNOF 95.3 Praise FM - Minneapolis/St. Paul

Faith 900 KTIS AM (Minneapolis)

DID YOU KNOW THAT THERE IS A BETHESDA THRIFT SHOP at 1550 White Bear Avenue? Phone number is 651-793-6352. This thrift shop is named "Dress for Less" and is located about a mile south of Hwy. 36 on White Bear Avenue. All profits go to Bethesda Lutheran Homes. "Dress for Less" sells jewelry, quality clothing, household goods and appliances, books, toys and one of a kind items. The store is open Monday – Saturday, 10:00 a.m. – 4:00 p.m. for shopping and to accept donations. Additional information can be found in the kiosks located near the library and the west entrance. If you would like to donate items but do not have a way to get them to the store, call Kay K or Shirley & Marty H and since we volunteer there, we may be able to take them for you

FARE FOR ALL EXPRESS a program of the Emergency Foodshelf Network, works with a variety of community partners to offer participants quality, affordable grocery packages each month. Fare for All Express will be at the Fridley Community Center (6085 7th Street N.E., Fridley) on July 15. Look for the brochure on the bulletin board near the elevator for more information or contact them at 763-450-3880.

Messiah Lutheran Church

2848 County Road H2 - Mounds View, MN 55112
(763)784-1786 - www.messiah-lutheran.org

WEEK AT A GLANCE: JUNE 27 – JULY 3, 2010

If you would like a printed version of our service today, copies are available on the table as you enter the Worship Center or you may ask one of the ushers for a copy.

TODAY:

7:30, 8:30* & 11:00 AM Worship Service - * Communion Service

9:45 AM Education Hour

6:30 PM Voter's Meeting

MONDAY:

6:00 PM MVCT Rehearsals

TUESDAY:

9:00 AM Tuesday Morning Work Crew

1:30 PM Program Staff Meeting

6:00 PM MVCT Rehearsals

7:30 PM AA

WEDNESDAY: NO SENIOR YOUTH

6:00 PM MVCT Rehearsals

THURSDAY:

2:00 PM Cribbage

7:00 PM Couples Bible Study/STEP Parenting Class

FRIDAY:

6:00 AM Men's Bible Study at RJ Riches

SATURDAY:

TODAY'S ORDER OF WORSHIP

7:30 & 8:30* SERVICES

BOTH SERVICES DISPLAYED ON POWER POINT SCREEN

Opening Hymn: "O Holy Spirit, Enter In" #913

Hymn of Praise: "O Sing to the Lord" #808

Old Testament Reading: 1 Kings 19:9b-21

New Testament Reading: Galatians 5:1, 13-25

Gospel Reading: Luke 9:51-62

Offering Hymn: "Come, Follow Me, the Savior Spake" #688

Sermon: "Real Freedom" Galatians 5:13, 24-25

Closing Hymn: "Sing Praise to God, the Highest Good" #819

8:30 Communion Hymns

"May We Thy Precepts, Lord, Fulfill" #698

"Spread the Reign of God the Lord" #830

11:00 SERVICE

Old Testament Reading: 1 Kings 19:9b-21

New Testament Reading: Galatians 5:1, 13-25

Gospel Reading: Luke 9:51-62

Sermon: "Real Freedom" Galatians 5:13, 24-25

THOSE SERVING YOU TODAY:

7:30, 8:30*, & 11:00 Services:

Worship Proclaimer & Leader: Pastor Richard Krogen

Organist: Kay A. Knutson

Ushers: 7:30 Jon S

8:30 Bill K, Dave K,
Jon K, Henry M

11:00 Sharon E, Rod R,
Bruce S

Worship Assistants: 7:30 Virgil B 8:30 John W 11:00 Jeff R

Readers: 7:30 Marilyn L 8:30 Richard D 11:00 Bill S

Greeters for June 27:

7:30 Lucille K - Don R 8:30 Jim & Kay K - Jo N

11:00 Ron & Dayle B - Jane L

Greeters for July 4:

7:30 Virgil & Ihla B 8:30 Jeff G

11:00 Joan C - Bruce S

Communion Assistants for the Month:

7:30 Myron S 8:30 Richard D 11:00 Bill S

Welcome Center:

7:15 - 7:30 Chuck & Gloria T 8:20 - 8:40 Forrest L

9:25 - 9:50 Sarah B 10:45 - 11:00 Rich & Sharon L

12:00 - 12:15 Tom R

Life Quote

“Our hope as Christians is in the resurrection of Jesus Christ.
Jesus said, ‘I am the resurrection and the life.

He who believes in me will live, even though he dies;
and whoever lives and believes in me will never die’ (John 11:25).

We can believe it!

Although we will die, we will live—eternally with Christ.”

Kay L. Meyer, director of development for Lutherans For Life

This “Life Quote” is from Lutherans For Life – www.lutheransforlife.org.

FOOD SHELF DONATIONS FOR JUNE: This month we are collecting non-perishable food items to be donated to the Ralph Reeder Shelf in New Brighton, serving families in Ramsey County. The items they are in short supply of are:

Canned Fruit	Ketchup	Mayo
Mustard	Chili	Spaghettios with meat
Stew	Hamburger Helper	Tuna Helper
Baked Beans	Dessert Mixes	Pudding/Jello
Sweet Cereal	Toilet Paper	Shampoo
Deodorant	Laundry Detergent	Dishwasher Detergent
Dish Soap	Baby Wipes	Diapers, sz. 5 and 6
Snack Items: crackers, chips, cookies, granola bars, fruit snacks		

You may leave your donation in the bin marked “Food Shelf” located in the hallway near the southwest entrance. You can also contribute by designating “Food Shelf” on your weekly offering envelope. Thank you for thinking of others while you do your weekly grocery shopping.

A GENTLE REMINDER to all who are planning to register a child in Messiah Preschool: Now is the time to apply for entrance to Messiah Preschool. I will be happy to send you all the forms that are needed. Please don’t delay and miss a chance to have your child attend our exceptional preschool. Remember that in addition to preparing children for kindergarten and early elementary school, your child will also learn about the love that God has poured out on them. – Shirley Beyer, Preschool Director

News & Notes – June 27, 2010

Welcome friends! We’re glad you’re here today. Whether you are a long-time member or a first-time visitor, please be sure to indicate so on one of the blue cards found in your bulletin. Please turn your blue card in during the time of the offerings. Visitors, please stop by the Welcome Center in the Gathering Space for your gift.

- **Directional Signage** is located throughout the building suspended from the ceilings. If you aren’t sure which way to go, look UP!
- **THE NURSERY** is available for parents and their children three years of age and younger and is located in the hallway across from the rear of the Sanctuary.
- **Busy Bags** are filled with quiet activities for your children to use during the service. They can be found in the entryway of the Gathering Space. The busy bags and their contents can be returned to the Gathering Space after the service.
- The **Welcome Center** is located right outside the Worship Center and is filled with information about Messiah and its many activities. Feel free to ask the volunteer any questions you may have.
- **Restrooms** are on the south side of the Gathering Space.
- If you would like to receive **Holy Communion** and are unable to approach the Communion Rail, please talk to one of the worship assistants or an usher before the service and they will assist you.
- **FM 88.1** Are you experiencing difficulty hearing during the worship service? Try listening to the worship service on a FM radio tuned to 88.1 FM. We encourage you to bring a good quality FM radio with high quality ear buds, and then listen direct to the pastor and music without the distractions. FM radios are also available at the welcome center.

LEADING OUR WORSHIP this morning is **Pastor Richard Krogen**. **Messiah’s Public Worship** is currently conducted and the Word proclaimed by three worship leaders, **Pastor Richard Krogen, Pastor Del Wippich** and **Pastor Philemon Ngare**. All are members of Messiah and share the public worship duties. **Kay Knutson** is our Director of Music and plans our Order of Worship. **JoElla Kath** is our church secretary and prepares our bulletin and News and Notes.

FLOWERS ON THE ALTAR THIS MORNING ARE GIVEN BY Ron and LuAnn O and family in memory of Walt and Dorothy O.

MITE BOX COLLECTION IS NEXT SUNDAY!

Sunday Morning Adult Education Class Schedule

	9:45am
	Blue Room B
6/27	Through the Bible
7/4	Through the Bible
7/11	Through the Bible

MISSING A LITTLE SOMETHING IN YOUR LIFE?? Perhaps it's a good daily dose of the Word of God!! Take this opportunity to let the Creator of the Universe - who stretched out the heavens like a tent and put all the stars in their place - speak to your heart! It's not too late to start reading through the Bible with a group from Messiah. Just because you didn't start in Genesis doesn't mean the word won't still speak to you. In fact, we believe it will. Start today!!

Reading Through the Bible for the week of June 27 – July 3 (to be discussed at 9:45 on Sunday, July 4) Job 8 – 27, Acts 8:26 – Acts 12.

VOTER'S MEETING

- A voter's meeting has been called for **TODAY, JUNE 27th, at 6:30 PM**. The purpose of this meeting is to extend a call for Messiah's Senior Pastor position. Self Evaluation Tool (SET) information has been made, and continues to be available for any member of our congregation to read. If you have not done so, please pick your packet up prior to tonight's meeting for prayerful deliberation. The copies are available in the church office. You must sign-out your packet, and the packet must be returned to the church office anytime today.
- Childcare **WILL BE AVAILABLE** at 6:30pm. Check-in your child at the nursery or Fireside Room. You will be required to sign them **IN** and **OUT**.
- An **INFORMATIONAL PACKET** developed by the call committee based on responses to our interview and written questions as well as demographic information will be made available **TODAY** at **4:30 PM**. The informational packet will also be handed out at the call meeting.
- Please continue to pray for this Divine Call. If able, arrive up to 2 hours early (4:30 PM) to receive this additional information to deliberate and pray over.

CONFIRMATION PARENTS: If you have not already done so, please return your child's confirmation gown to the Resource Center. Thanks! Phyllis G

COULDN'T MAKE IT TO THE WALK? IT'S NOT TOO LATE TO GIVE!

While you missed the fun, your help is still needed! Would you consider joining us by making a tax-deductible donation? It's fast, easy and secure. Just visit www.nlfs.org or call (612)866-7643 to contribute to the live-saving work of New Life Family Services today!

"I would like to thank Pastor Del for his visits while I was in the hospital recently recovering from shoulder surgery. Also, I would like to thank the members of Messiah for their prayers for my recovery. Your care and concern are very important to me."

Karen Sa

"Thank you Pastor Krogen and Pastor Wippich and members of Messiah for all the prayers, cards, visits and food during Fred's illness and passing and for all your kindness, it was appreciated. May the Lord bless each of you. " Ruth G

PLEASE JOIN US IN CELEBRATING Helen Bringewatt's 90th birthday in the Crossroads, Sunday, July 11th, 2-4 pm. No gifts please.

ALERT! No one has come forth in answer to our request for someone to monitor the landscape program. We are also looking for a person or family to care for the area around Luther Hall and one of the medians in the parking lot. Please contact Curt who has the information.

RED CROSS BLOOD DRIVE AT MESSIAH



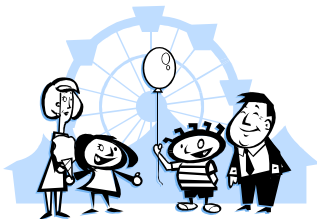
If you haven't already signed up for an appointment time to donate blood at the Blood Drive which will be here at Messiah on Tuesday, July 13th you can do so **TODAY** between worship services in the Gathering Space. To donate on July 13th you should not have donated since May 19th. If you still want to schedule an appointment time after this morning, you can register on line at Redcrossblood.org or call Kay K up until July 12th. You may also come without an appointment and you will be taken just as soon as possible.

ALREADY GONE – Why your kids will quit church and what you can do to stop it. Statistics reveal a huge disconnect taking place between our children and their church experience. Nationwide polls and denominational reports are showing that the next generation is calling it quits on the traditional church. And it's not just happening on the nominal fringe; it's happening at the core of the faith. This softcover book from Answers in Genesis is written by Ken Hamm and Britt Beemer. The following groups at Messiah are reading this book and discussing it: Leadership Council, Elders, Confirmation staff, Sunday school staff and each of our three Pastors has a copy. Messiah ordered 50 of these books and there are 15 left. Contact Tom R if you would like a copy. The cost is \$4.50

A BIG THANK YOU to everyone that donated jelly jars for the Bazaar. We are half way there, so if you still have some extra Kerr half pint jars with the rings that aren't in use, you could leave them in the kitchen marked "Bazaar". If you have any questions, call Lucille K.

KNOLLWOOD DRIVE – UPDATE REPORT #3:

This week the contractors are expecting to demolish the asphalt surface from Knollwood Drive. The resident's mail boxes have been located on the south end of Messiah's parking lot. Please be considerate of the residents as they search for their mail. The contractors will try to restore access to our driveways every evening and for the weekends, but if these accesses look too crude, please use the north (H2) driveway entrance. Expect additional trenching as Messiah is replacing the (3) clay tile sewer pipes from the main sewer to the property line. **Please be careful every time you come and depart.** Watch out for construction workers and obstructions from 7:00 AM to about 5:00 PM week days. Expect changes daily. Please do not let this project limit your participation in any of the many activities or worship services at Messiah. For questions, ask any of the Tuesday Crew. *The Tuesday Crew*



VALLEYFAIR COUPONS

are available on the bulletin board by the donation area. Please feel free to take what you need throughout the summer (or until they are gone). Have fun!

MESSIAH BOOK CLUB'S SELECTION FOR JULY is "The Piano Tuner" by Daniel Mason. It's the story of a shy, middle-aged piano tuner named Edgar Drake who receives an unusual commission from the British War Office to travel to the remote jungles of northeast Burma to repair a rare piano belonging to an eccentric army surgeon who has proven indispensable to the imperial design. Come join us on Thursday, July 15th, at 2:00 in the CrossRoads area. If you'd like a copy of the book, call Audrey.

SENIOR YOUTH UPDATE:

We do not have Youth until July 14th. Wed. July 14th is a "Let's Do" We will be going to Feed My Starving Children.

Summer Schedule

Wed. June 23rd-No Youth

Sunday June 27th-July 3rd Teenserve in New London, WI

Wed. June 30rd- No Youth

Wed. July 7th-No Youth

Wed. July 14th- "Let's do" Feed My Starving Children leave Luther Hall by 5:30PM

Wed. July 21st- Saint Paul Saints Game with Tailgate Party

Wed. July 28th-No Youth

Wed. Aug. 4th- "Let's Talk" outdoor Bible Study

Sunday Aug 8th-Aug 13th Madeline Island Camping Trip

Wed Aug. 11th-No Youth

Wed. Aug 18th-No Youth

Wed Aug 25th- Saint Paul Saints game w/ Fireworks Show!

START COLLECTING! We will be hosting another "Hands ON!" event in August for kids. One of our crafts will be making musical instruments. Please bring in plastic bottles or jars with screw-on covers, such as juice or water bottles or peanut butter jars. Also, we will need round drum-like containers (with lids), such as ovaltine or oatmeal boxes or coffee cans. If anyone wishes to donate beads, dried beans, rice or noodles for this project we would gladly accept those as well. Please drop off in the donation area. Thanks!

OFFERINGS: General Fund: \$10,804 Mortgage Fund: \$4,940 Missions: \$0 (5.0% of General Fund) \$540 Weekly Fund Needs: \$12,355 Weekly Mortgage Fund Needs: \$4,053

ATTENDANCE: Sunday: 323