

Community Outreach

METRO LUTHERAN: Who cares for the caregiver? Pastors are integrally involved in the lives of people who are experiencing stress. But when pastors experience those same burdens, where can they go? This month's Metro Lutheran includes an article about Shepherd's Canyon Retreat ministry, a pan-Lutheran effort to support struggling pastors, on page 8. Copies are available at the Welcome Center and the kiosks (one located near the library and the other near the west entrance.)

CHRISTIAN MUSIC RADIO STATIONS in the Twin Cities - when you need a positive boost to your day!!

KTIS 98.5 FM - contemporary worship

Air1 Radio 97.7 (Coon Rapids-Maple Grove), 102.5 (Minneapolis-Edina), 92.1 (St. Paul) - pop/rock mix

KLOVE 93.3 (Minneapolis), 92.9 (St. Paul) - family friendly contemporary pop/worship

WWW.RadioU.com - online stream featuring rock, punk, hardcore, hip-hop/fusion and goofy djs with a serious message (target audience: boys aged 10-24)

KNOF 95.3 Praise FM - Minneapolis/St. Paul

Faith 900 KTIS AM (Minneapolis)

DID YOU KNOW THAT THERE IS A BETHESDA THRIFT SHOP at 1550 White Bear Avenue? Phone number is 651-793-6352. This thrift shop is named "Dress for Less" and is located about a mile south of Hwy. 36 on White Bear Avenue. All profits go to Bethesda Lutheran Homes. "Dress for Less" sells jewelry, quality clothing, household goods and appliances, books, toys and one of a kind items. The store is open Monday – Saturday, 10:00 a.m. – 4:00 p.m. for shopping and to accept donations. Additional information can be found in the kiosks located near the library and the west entrance. If you would like to donate items but do not have a way to get them to the store, call Kay Kinzie (651-633-1643) or Shirley & Marty Hoeft (651-486-9222) and since we volunteer there, we may be able to take them for you

FARE FOR ALL EXPRESS a program of the Emergency Foodshelf Network, works with a variety of community partners to offer participants quality, affordable grocery packages each month. Fare for All Express will be at the Fridley Community Center (6085 7th Street N.E., Fridley) on July 15. Look for the brochure on the bulletin board near the elevator for more information or contact them at 763-450-3880.

Messiah Lutheran Church
2848 County Road H2 - Mounds View, MN 55112
(763)784-1786 - www.messiah-lutheran.org

WEEK AT A GLANCE: JULY 11 – JULY 17, 2010

If you would like a printed version of our service today, copies are available on the table as you enter the Worship Center or you may ask one of the ushers for a copy.

TODAY:

7:30, 8:30* & 11:00 AM Worship Service - * Communion Service

9:45 AM Education Hour

MONDAY:

TUESDAY:

9:00 AM Tuesday Morning Work Crew

1:30 PM Program Staff Meeting

2:00 PM – 7:00 PM Red Cross Blood Drive

7:30 PM AA

WEDNESDAY:

4:45 PM Wednesday Summer Evening Meal

5:30 PM Senior Youth to Feed My Starving Children

THURSDAY:

2:00 PM Cribbage/Messiah Book Club

7:00 PM Couples Bible Study/STEP Parenting Class

FRIDAY:

6:00 AM Men's Bible Study at RJ Riches

SATURDAY:

TODAY'S ORDER OF WORSHIP

7:30 & 8:30* SERVICES

BOTH SERVICES DISPLAYED ON POWER POINT SCREEN

Opening Hymn: "O Christ, Our Hope, Our Hearts' Desire" # 553 Vs 1, 2, 4 & 6

Hymn of Praise: "Praise the One Who Breaks the Darkness" # 849

Old Testament Reading: Leviticus 18: 1-5 and 19: 9-18

New Testament Reading: Colossians 1: 1-14

Gospel Reading: Luke 10: 25-37

Hymn of Response: "The Law of God is Good and Wise" # 579 Vs 1, 2 & 6

Offering Hymn: "O God of Mercy, God of Might" # 852 Vs 1, 3 & 5

Sermon: "A Call to Compassion" St Luke 10: 25-37

Closing Hymn: "Son of God, Eternal Savior" # 842 Vs 1, 2 & 3

8:30 Communion Hymns

"What Wondrous Love Is This" # 543

Your Table I Approach" # 628

11:00 SERVICE

Old Testament Reading: Leviticus 18: 1-5 and 19: 9-18

New Testament Reading: Colossians 1: 1-14

Gospel Reading: Luke 10: 25-37

Sermon: "A Call to Compassion" St Luke 10: 25-37

THOSE SERVING YOU TODAY:

7:30, 8:30*, & 11:00 Services:

Worship Proclaimer & Leader: Pastor Philemon Ngare
Organist: Kay A. Knutson
Ushers: 7:30 Roleene R & Nikki R
8:30 Brad B, Chuck H,
John K, Wally S
11:00 Brady B, Alice Q,
Tom L

Worship Assistants: 7:30 Steve G 8:30 Jim K 11:00 Hans H

Readers: 7:30 Linda R 8:30 Dave K 11:00 Hans H

Greeters for July 11:

7:30 Jim & Joyce B 8:30 Jerry & Yvonne P – Shirley O

11:00 Kirby & Sharon E – Jane L

Greeters for July 18:

7:30 Oral & Alta E 8:30 Wally & Jan S – Kay T

11:00 Tom & Vivian F – Lynn R

Communion Assistants for the Month:

7:30 8:30 11:00

Welcome Center:

7:15 – 7:30 Bob & Joanne A 8:20 – 8:40 Karen H

9:25 – 9:50 Peggy D 10:45 – 11:00 Bev T

12:00 – 12:15 Joanne M

Life Quote

“Sin produces consequences. But praise God, there is Hope! There is always Hope for those who love and trust God! This Hope died for our sin and rose to victory! Hope is Jesus Christ who covers the repentant sinner with mercy every morning!” *Linda Bartlett, founder of Titus 2 for Life (www.titus2-4life.org)* **This “Life Quote” is from Lutherans For Life – www.lutheransforlife.org.**

FOOD SHELF DONATIONS – This month we will be collecting non-perishable food items for the CEAP Food Shelf, which serves families in Ramsey County. The items they are in need of are:

Cereal	Tuna	Canned Chicken	White Sugar
Juice	Peanut Butter	Canned Fruit	Macaroni & Cheese
Canned Vegetables			

Please leave your donation in the bins located near the southwest entrance. You can also donate by indicating “Food Shelf” on your offering envelope. Thanks!



MARK YOUR CALENDAR

The 2nd annual ***Hands ON!*** event will be held

Wednesday, August 18

5:00-7:00pm

with Merlajean Garten and her Parading Puppets and plenty of fun puppet and instrument crafts...

Don't miss it!

THANK GOD FOR ALL HIS BLESSINGS. Messiah Lutheran Church has received and is receiving daily blessings from the Lord. Today I would like you to join me in thanking Him for the 37 years that He has blessed us with a fine Christian preschool. Many children and staff have passed through our doors in that time and many more are to come. Please also pray for those who will be blessed through our preschool in the 2010-2011 school year. *Shirley Beyer, Preschool Director*

Welcome friends! We're glad you're here today. Whether you are a long-time member or a first-time visitor, please be sure to indicate so on one of the blue cards found in your bulletin. Please turn your blue card in during the time of the offerings. Visitors, please stop by the Welcome Center in the Gathering Space for your gift.

- **Directional Signage** is located throughout the building suspended from the ceilings. If you aren't sure which way to go, look UP!
- **THE NURSERY** is available for parents and their children three years of age and younger and is located in the hallway across from the rear of the Sanctuary.
- **Busy Bags** are filled with quiet activities for your children to use during the service. They can be found in the entryway of the Gathering Space. The busy bags and their contents can be returned to the Gathering Space after the service.
- The **Welcome Center** is located right outside the Worship Center and is filled with information about Messiah and its many activities. Feel free to ask the volunteer any questions you may have.
- **Restrooms** are on the south side of the Gathering Space.
- If you would like to receive **Holy Communion** and are unable to approach the Communion Rail, please talk to one of the worship assistants or an usher before the service and they will assist you.
- **FM 88.1** Are you experiencing difficulty hearing during the worship service? Try listening to the worship service on a FM radio tuned to 88.1 FM. We encourage you to bring a good quality FM radio with high quality ear buds, and then listen direct to the pastor and music without the distractions. FM radios are also available at the welcome center.

LEADING OUR WORSHIP this morning is **Pastor Philemon Ngare**. Messiah's **Public Worship** is currently conducted and the Word proclaimed by three worship leaders, **Pastor Richard Krogen, Pastor Del Wippich** and **Pastor Philemon Ngare**. All are members of Messiah and share the public worship duties. **Kay Knutson** is our Director of Music and plans our Order of Worship. **JoElla Kath** is our church secretary and prepares our bulletin and News and Notes.

I AM IN NEED OF SOME EXTRA HELP for the Wednesday night supper **THIS WEEK**. If you would be available to husk or wash corn, serve or clean up, please call me. (The corn could be done earlier in the day on Wednesday.) We also need 2 more pans of bars. Thanks. Jo N

Sunday Morning Adult Education Class Schedule

	9:45am
	Blue Room B
7/11	Through the Bible
7/18	Through the Bible
7/25	Through the Bible

MISSING A LITTLE SOMETHING IN YOUR LIFE?? Perhaps it's a good daily dose of the Word of God!! Take this opportunity to let the Creator of the Universe - who stretched out the heavens like a tent and put all the stars in their place - speak to your heart! It's not too late to start reading through the Bible with a group from Messiah. Just because you didn't start in Genesis doesn't mean the word won't still speak to you. In fact, we believe it will. Start today!!

Reading Through the Bible for the week of July 11 – July 17 (to be discussed at 9:45 on Sunday, July 11) Psalm 1 - 22, Acts 17 – 21:17.

CONFIRMATION PARENTS: If you have not already done so, please return your child's confirmation gown to the Resource Center. Thanks! Phyllis G

PLEASE JOIN US IN CELEBRATING Helen B 90th birthday in the Crossroads, Sunday, July 11th, 2-4 pm. No gifts please.



RED CROSS BLOOD DRIVE - THIS TUESDAY, July 13th
2:00 - 7:00 PM

If you would like to donate and have not scheduled an appointment you may still do so by calling Kay K. If you have scheduled an appointment but have forgotten the time or need to change or cancel the appointment, please call Kay before Tuesday, or call the church office (763-784-1786) on Tuesday and they will pass the message onto the Blood Drive coordinators. As always, walk-ins are welcome and will be taken as soon as possible. Thanks to everyone who donates!

MESSIAH BOOK CLUB'S SELECTION FOR JULY is "The Piano Tuner" by Daniel Mason. It's the story of a shy, middle-aged piano tuner named Edgar Drake who receives an unusual commission from the British War Office to travel to the remote jungles of northeast Burma to repair a rare piano belonging to an eccentric army surgeon who has proven indispensable to the imperial design. Come join us on Thursday, July 15th, at 2:00 in the CrossRoads area. If you'd like a copy of the book, call Audrey



Wednesday Evening Menu (July 14)

BBQ Chicken Legs, Sweet Corn,
Salad, Bread & Dessert
5 PM – 6 PM
** Free Will Donation**



WE WILL BE COLLECTING SCHOOL SUPPLIES again this year for area children. You can start watching for great sales and stocking up! Items may be put in the donation area. Thanks.

OFFERINGS: General Fund: \$ 10,218 Mortgage Fund: \$ 3,213
Missions: \$ (5.0% of General Fund) \$ 511 Weekly Fund Needs: \$12,355 Weekly Mortgage Fund Needs: \$4,053

ATTENDANCE: Sunday: 207

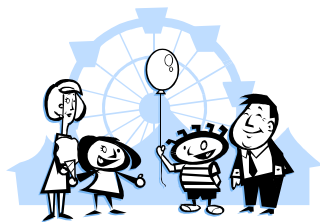
Kingdom Kids is going to be growing this fall!! We will be adding new exciting activities, family nights, and opportunity for spiritual growth. But, to do this we need some new volunteers to help. If you love sharing your faith with children, this may be the perfect place to plug into. You can call Allison Burkhaw or Kay Knutson at (763)784-1786 or Mike G.



VOLUNTEERS NEEDED ON AUGUST 18 If you can help children at a craft table or prep and serve hotdogs, please sign-up on the sheet located next to the elevator on the "Events" board. It is lots of fun! Many thanks.

KNOLLWOOD DRIVE – UPDATE REPORT #3:

This week the contractors are expecting to demolish the asphalt surface from Knollwood Drive. The resident's mail boxes have been located on the south end of Messiah's parking lot. Please be considerate of the residents as they search for their mail. The contractors will try to restore access to our driveways every evening and for the weekends, but if these accesses look too crude, please use the north (H2) driveway entrance. Expect additional trenching as Messiah is replacing the (3) clay tile sewer pipes from the main sewer to the property line. **Please be careful every time you come and depart.** Watch out for construction workers and obstructions from 7:00 AM to about 5:00 PM week days. Expect changes daily. Please do not let this project limit your participation in any of the many activities or worship services at Messiah. For questions, ask any of the Tuesday Crew. *The Tuesday Crew*



VALLEYFAIR COUPONS

are available on the bulletin board by the donation area. Please feel free to take what you need throughout the summer (or until they are gone). Have fun!

START COLLECTING! We will be hosting another

"Hands ON!" event in August for kids. One of our crafts will be making musical instruments. Please bring in plastic bottles or jars with screw-on covers, such as juice or water bottles or peanut butter jars. Also, we will need round drum-like containers (with lids), such as ovaltine or oatmeal boxes or coffee cans. If anyone wishes to donate ribbons, beads, dried beans, rice or noodles for this project we would gladly accept those as well. Please drop off in the donation area. Thanks!



Senior Youth Update:

We have been taking a small break over the last few weeks. Hope everyone is having a safe and fun summer so far. Please make sure to review the schedule below. We have lots of cool events coming up in the next few weeks.

Sr. Youth Apostle Island Camping Trip!

Students, listen up if you are searching for a way to get involved in Sr. Youth this is a great opportunity to make some new friends. No Excuses come with us and have a blast. We tent camp on Madeline Island, swim and hang out on the beach. Space is limited! Aug. 8th-13th Cost is \$145. Contact Becky Kunz bkunz@messiah-lutheran.org for more information and to sign up. It is an amazing trip with tons of fun you won't want to miss out on.

We do not have Youth until July 14th. Wed. July 14th is a "Let's Do" We will be going to Feed My Starving Children.

Summer Schedule

Wed. July 7th-No Youth

Wed. July 14th- "Let's do" Feed My Starving Children leave Luther Hall by 5:30PM

Wed. July 21st- Saint Paul Saints Game with Tailgate Party

Wed. July 28th-No Youth

Wed. Aug. 4th- "Let's Talk" outdoor Bible Study

Sunday Aug 8th-Aug 13th Madeline Island Camping Trip

Wed Aug. 11th-No Youth

Wed. Aug 18th-No Youth

Wed Aug 25th- Saint Paul Saints game w/ Fireworks Show!

ALERT! No one has come forth in answer to our request for someone to monitor the landscape program. We are also looking for a person or family to care for the area around Luther Hall and one of the medians in the parking lot.

Please contact Curt who has the information.