

Community Outreach

METRO LUTHERAN: Do you want some lighter reading for the midsummer heat? Read Jean Johansson's ode to Butter Braid on page 3 of the July issue of Metro Lutheran. Copies are available at the Welcome Center and the kiosks (one located near the library and the other near the west entrance.)

LES FELDICK MINISTRIES UPCOMING SEMINARS: August 20-22, 2010, Prior Lake, MN (15033 Hwy. 13 South). Les will be teaching Friday and Saturday evening from 7:00 p.m. – 9:00 p.m. and Sunday morning Les will teach the morning services at 9:00 a.m. and 10:15 a.m., followed by a Pot Luck Dinner. For more information, please contact the church at 952-226-6651 or www.bethesdachurch.com

DID YOU KNOW THAT THERE IS A BETHESDA THRIFT SHOP at 1550 White Bear Avenue? Phone number is 651-793-6352. This thrift shop is named "Dress for Less" and is located about a mile south of Hwy. 36 on White Bear Avenue. All profits go to Bethesda Lutheran Homes. "Dress for Less" sells jewelry, quality clothing, household goods and appliances, books, toys and one of a kind items. The store is open Monday – Saturday, 10:00 a.m. – 4:00 p.m. for shopping and to accept donations. Additional information can be found in the kiosks located near the library and the west entrance. If you would like to donate items but do not have a way to get them to the store, call Kay Kinzie (651-633-1643) or Shirley & Marty Hoefl (651-486-9222) and since we volunteer there, we may be able to take them for you

MINNESOTA STATE FAIR IS PLEASED TO ANNOUNCE Mercy Me with special guests Jeremy Camp and Joel Hanson at the Grandstand on Thursday, September 2, 2010. A spectacular fireworks display will follow the show. Ticket prices are \$34 and \$24. Groups of 25 or more receive \$2.00 off each ticket. Visit www.mnstatefair.org for more information.

Messiah Lutheran Church
2848 County Road H2 - Mounds View, MN 55112
(763)784-1786 - www.messiah-lutheran.org

WEEK AT A GLANCE: JULY 25 – JULY 31, 2010

If you would like a printed version of our service today, copies are available on the table as you enter the Worship Center or you may ask one of the ushers for a copy.

TODAY:

7:30, 8:30* & 11:00 AM **Worship Service** - * Communion Service
9:45 AM Education Hour

MONDAY:

TUESDAY:

9:00 AM Tuesday Morning Work Crew
1:30 PM Program Staff Meeting
7:30 PM AA

WEDNESDAY: NO SENIOR YOUTH

THURSDAY:

2:00 PM Cribbage
7:00 PM Couples Bible Study/STEP Parenting Class

FRIDAY:

SATURDAY:

TODAY'S ORDER OF WORSHIP

7:30 & 8:30* SERVICES

BOTH SERVICES DISPLAYED ON POWER POINT SCREEN

Opening Hymn: "Come, Holy Ghost, God and Lord" #497

Hymn of Praise: "All Praise to Thee, for Thou, O King Divine" #815
Vs. 1, 5

Old Testament Reading: Genesis 18:17-33

New Testament Reading: Colossians 2:6-19

Gospel Reading: Luke 11:1-13

Offering Hymn: "What A Friend We Have in Jesus" #770

Sermon: "Ordering From God's Catalog" Luke 11:1-13

Closing Hymn: "Savior, Again to Thy Dear Name We Raise" #917

8:30 Communion Hymns

I COME TO THE CROSS_ (Printed Out)
HOW DEEP THE FATHER'S LOVE FOR US (Printed Out)

11:00 SERVICE

Old Testament Reading: Genesis 18:17-33

New Testament Reading: Colossians 2:6-19

Gospel Reading: Luke 11:1-13

Sermon: "Ordering From God's Catalog" Luke 11:1-13

THOSE SERVING YOU TODAY:

7:30, 8:30*, & 11:00 Services:

Worship Proclaimer & Leader: Pastor Del Wippich

Organist: Kay A. Knutson

Children's Message: 11:00 Hans H

Ushers: 7:30 Roleene R & Nikki R

8:30 Brad B, Chuck H,
John K, Wally S

11:00 Brady B, Alice Q,
Tom L

Worship Assistants: 7:30 Steve G 8:30 Jim K 11:00 Hans H

Readers: 7:30 Gail N 8:30 Gary B 11:00 Jean K

Greeters for July 25:

7:30 Ron & Carol S 8:30 Bernie & Twyla V – Edna V

11:00 Mike & Dawn H – Carl S

Greeters for August 1:

7:30 Gerald & Grace G 8:30 John & Jackie W – Jeff G

11:00 Matt & Candace J – Jan S

Communion Assistants for the Month:

7:30 8:30 11:00

Welcome Center:

7:15 – 7:30 Jim & Joyce B 8:20 – 8:40 Bev S

9:25 – 9:50 Jo N 10:45 – 11:00 Don H

12:00 – 12:15 Nancy C

Life Quote

Along with the facts about abstinence, parenting, adoption, and abortion, it is important for parents to talk with their teens before a crisis. Teens need to know there is nothing they could ever do that could not be handled with God's help."

Grace Kern, director of Word of Hope (888-217-8679)

**This "Life Quote" is from Lutherans For Life –
www.lutheransforlife.org.**

FOOD SHELF DONATIONS – This month we will be collecting non-perishable food items for the CEAP Food Shelf, which serves families in Ramsey County. The items they are in need of are:

Cereal	Tuna	Canned Chicken	White Sugar
Juice	Peanut Butter	Canned Fruit	Macaroni & Cheese
Canned Vegetables			

Please leave your donation in the bins located near the southwest entrance. You can also donate by indicating "Food Shelf" on your offering envelope. Thanks!



MARK YOUR CALENDAR

The 2nd annual ***Hands ON!*** event will be held

Wednesday, August 18

5:00-7:00pm

with Merlajean Garten and her Parading Puppets and plenty of fun puppet and instrument crafts...Registration information and leaders of all

of our fall children's programs will also be there. ***Don't miss the FUN!***

STEPHEN MINISTERS, we meet on August 2 at 6:30 for continuing education and 7:30 for supervision. Ev has devotions and Linda S has snack for this meeting. Hope to see you there

News & Notes – July 25, 2010

Welcome friends! We're glad you're here today. Whether you are a long-time member or a first-time visitor, please be sure to indicate so on one of the blue cards found in your bulletin. Please turn your blue card in during the time of the offerings. Visitors, please stop by the Welcome Center in the Gathering Space for your gift.

- **Directional Signage** is located throughout the building suspended from the ceilings. If you aren't sure which way to go, look UP!
- **THE NURSERY** is available for parents and their children three years of age and younger and is located in the hallway across from the rear of the Sanctuary.
- **Busy Bags** are filled with quiet activities for your children to use during the service. They can be found in the entryway of the Gathering Space. The busy bags and their contents can be returned to the Gathering Space after the service.
- The **Welcome Center** is located right outside the Worship Center and is filled with information about Messiah and its many activities. Feel free to ask the volunteer any questions you may have.
- **Restrooms** are on the south side of the Gathering Space.
- If you would like to receive **Holy Communion** and are unable to approach the Communion Rail, please talk to one of the worship assistants or an usher before the service and they will assist you.
- **FM 88.1** Are you experiencing difficulty hearing during the worship service? Try listening to the worship service on a FM radio tuned to 88.1 FM. We encourage you to bring a good quality FM radio with high quality ear buds, and then listen direct to the pastor and music without the distractions. FM radios are also available at the welcome center.

LEADING OUR WORSHIP this morning is **Pastor Del Wippich**. **Messiah's Public Worship** is currently conducted and the Word proclaimed by three worship leaders, **Pastor Richard Krogen, Pastor Del Wippich** and **Pastor Philemon Ngare**. All are members of Messiah and share the public worship duties. **Kay Knutson** is our Director of Music and plans our Order of Worship. **JoElla Kath** is our church secretary and prepares our bulletin and News and Notes.

FLOWERS ON THE ALTAR THIS MORNING ARE GIVEN BY Wally & Jan S in celebration of their 51st wedding anniversary. May the Lord continue to bless you.

Sunday Morning Adult Education Class Schedule

	9:45am
	Room #210
7/25	Through the Bible
8/1	Through the Bible
8/	Through the Bible

JOIN US IN READING THROUGH THE BIBLE - and get to know the Creator of the universe who is both terrifyingly powerful and gloriously holy. He wrote the book with the specific purpose of introducing you to his character, plans, and purposes. This terrifyingly powerful Lord who sits enthroned above the circle of the earth and looks down on people as if they were grasshoppers, who measured out the waters of the earth in the hollow of his hand and who brings princes to naught, is the same Lord who tends his flock like a shepherd, gathers the lambs into his arms, quiets them with his love and rejoices over them with singing (Isaiah 40:11, 12, 22, 23; Zephaniah 3:17, NIV). It's okay if you don't understand everything you read. The Holy Spirit will make sure that you understand enough to be in awe of his glorious holiness!

Discussion today, Sunday, July 25: Psalms 20-36, Acts 21-25

Week of July 25-31 (Discussion Sunday, August 1: Psalms 37-56, Acts 26- Romans 3)

Sun: Psalms 37-39, Acts 26

Mon: Psalms 40-42, Acts 27:1-26

Tues: Psalms 43-45, Acts 27:27-44

Wed: Psalms 46-48, Acts 28

Thurs: Psalms 49-50, Romans 1

Fri: Psalms 51-53, Romans 2

Sat: Psalms 54-56, Romans 3

FINANCIAL STATEMENTS for the first half of 2010 are available on the table by the Welcome Center.

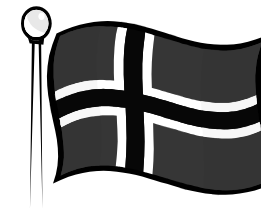
MITE BOX COLLECTION IS NEXT SUNDAY! Bring in your Mite Boxes and leave them in the giant mite boxes located near the west entrance and in the Crossroads Area.

AUGUST 4 MESSIAH SENIORS CLUB, 9:45 A.M. Join us for an indoor picnic. Wieners and buns will be furnished. Bring a side dish. The program: A speaker will talk to us about planning the physical and financial arrangements that need to be made to obtain a cemetery plot. Come and join us.



KINGDOM KIDS is going to be growing this fall!! We will be adding new exciting activities, family nights, and opportunity for spiritual growth. But, to do this we need some new volunteers to help. If you love sharing your faith with children, this may be the perfect place to plug into. You can call Allison Burkhow or Kay Knutson at (763)784-1786 or Mike G.

TIME IS RUNNING OUT! Have you registered your child for Messiah Preschool? We would love to make room for your child in our Christ-centered and caring preschool. Don't wait any longer to register. Call Shirley Beyer at 763-784-1786 today.



A INSPIRING ADVENTURE TO NORWAY - Registrations are now being accepted for a June 2011 trip to magnificent Norway, a land of mountains, fjords, thriving cities and picturesque villages. Pastor Bruce and Ann Frederickson invite you to join an exciting trip featuring all of these and more! Descriptive folders, complete with registration information are available here at church. Contact the Fredericksons if you would like more information BruceF6300@comcast.net 763.786.2723.



WE WILL BE COLLECTING SCHOOL SUPPLIES again this year for area children. You can start watching for great sales and stocking up! Items may be put in the donation area. Thanks.

The family of Leo Hetland would like to thank the Ladies Guild, Elder John Walther, Messiah staff, Pastor Frederickson, and our Messiah friends for the courtesy, care, and expressions of sympathy given to us as we said good-bye to our brother and father.

Jerry H & family

OFFERINGS: General Fund: \$10,792 Mortgage Fund: \$3,792 Missions: \$100 (5.0% of General Fund) \$540 Weekly Fund Needs: \$12,355 Weekly Mortgage Fund Needs: \$4,053

ATTENDANCE: Sunday: 257

FRIDAY MORNING BIBLE STUDY – RJ Riches – will not be meeting for the month of July. We will resume the study Friday August 6th at 6:00 AM. We are presently conducting a Biblical word study following the Little Church guide. Over the following weeks we study – CARE (OT & NT) – GENEROSITY – INCREASE – GODLINESS – IMPOSSIBILITY – KEEP. Please, join us for breakfast, fellowship and study.

VOLUNTEERS NEEDED: WOM is again planning for the 5th year to help CEAP (Community Emergency Assistance Program) in Anoka County with Back to School Days on Wednesday, August 25 from 9:00 -1:00 at Christ Lutheran Church, 641 - 89th Avenue, Blaine. We are asking for volunteers to help sort, put school supplies in order and fill school bags for distribution. Last year was a record number of children who received school bags. I have been told families are already signing up which is sooner than other years. The estimated cost of this program is \$35.00 per child and this is reached through donations.

Please consider volunteering for this worthwhile project. Sign up on the bulletin board by the elevator. If you would like to donate school supplies, they will be more than welcomed. Each year we run short of kleenex, red pens, highlighters, erasers and glue sticks. Please drop your donation off in the box by the offices. Thanks.



VOLUNTEERS NEEDED ON AUGUST 18 If you can help children at a craft table or prep and serve hotdogs, please sign-up on the sheet located next to the elevator on the "Events" board. It is lots of fun! Many thanks.

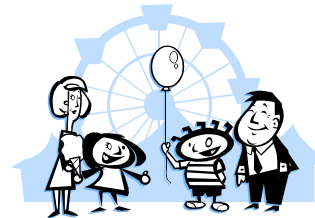
ALERT! No one has come forth in answer to our request for someone to monitor the landscape program. We are also looking for a person or family to care for the area around Luther Hall and one of the medians in the parking lot.

Please contact Curt who has the information.

KNOLLWOOD DRIVE UPDATE REPORT #5:

The Knollwood Drive road improvement project is well underway. The asphalt surface has been removed and the three sewer lines replaced. The next step is revising the street grade and then installing the new curb and drive way entrances. The driveway to the front door will have generous radiuses in response to the many complaints we received about the original driveway design. The contractor has been doing an excellent job of providing access to our parking lots, but should they look too crude, please use the north (H2) driveway entrance. **Please be careful as you come and depart**, always watching for construction workers, obstructions and expect changes daily. Thank you for your patience and your continued participation in the many activities and worship services at Messiah during this project. For questions, ask any of the Tuesday Crew.

The Tuesday Crew



VALLEYFAIR COUPONS

are available on the bulletin board by the donation area. Please feel free to take what you need throughout the summer (or until they are gone). Have fun!

Senior Youth Update:

Carl S

Sr. Youth Apostle Island Camping Trip!

Students, listen up if you are searching for a way to get involved in Sr. Youth this is a great opportunity to make some new friends. No Excuses come with us and have a blast. We tent camp on Madeline Island, swim and hang out on the beach. Space is limited! Aug. 8th-13th Cost is \$145. Sign-up deadline is July 31st. Contact Becky Kunz bkunz@messiah-lutheran.org for more information and to sign up. It is an amazing trip with tons of fun you won't want to miss out on.

Summer Schedule

Wed. July 21st- Saint Paul Saints Game with Tailgate Party
Wed. July 28th-No Youth
Wed. Aug. 4th-“Let's Talk” outdoor Bible Study
Sunday Aug 8th-Aug 13th Madeline Island Camping Trip
Wed Aug. 11th-No Youth
Wed. Aug 18th-No Youth
Wed Aug 25th- Saint Paul Saints game w/ Fireworks Show!



START COLLECTING! We will be hosting another “Hands ON!” event in August for kids. One of our crafts will be making musical instruments. Please bring in plastic bottles or jars with screw-on covers, such as juice or water bottles or peanut butter jars. Also, we will need round drum-like containers (with lids), such as ovaltine or oatmeal boxes or coffee cans. If anyone wishes to donate ribbons, beads, dried beans, rice or noodles for this project we would gladly accept those as well. Please drop off in the donation area. Thanks!

LAY LEADERSHIP INSTITUTE OF IOWA DISTRICT WEST is currently being planned for 2010-2011. Please let me know your interest level in participating in this upcoming year. We are currently working with Concordia St. Paul to work out all the partnership arrangements. We have lowered the cost for the program and the cost is now \$2250 for the Academic year. This breaks down to \$225 per weekend. Travel costs are also at your expense. In order for us to keep this lower rate we will need to have 12 full time credit students. Currently there are 7 potential students interested in taking the program. Please pass this information along to anyone you feel who would benefit from, taking the courses. There is also financial aid for students within Iowa District West. Last day to register is August 15th. If you have questions, please contact me.