

## Community Outreach

**METRO LUTHERAN:** In August 1961 Luther Leaguers from the ALC gathered in Miami for a huge youth gathering. Controversy erupted when the Rev. Martin Luther King, Jr. was invited to speak to the youth. Find out the rest of the story on page 7 of the August issues of Metro Lutheran. Copies are available at the Welcome Center and the kiosks (one located near the library and the other near the west entrance.)

**LES FELDICK MINISTRIES UPCOMING SEMINARS:** August 20-22, 2010, Prior Lake, MN (15033 Hwy. 13 South). Les will be teaching Friday and Saturday evening from 7:00 p.m. – 9:00 p.m. and Sunday morning Les will teach the morning services at 9:00 a.m. and 10:15 a.m., followed by a Pot Luck Dinner. For more information, please contact the church at 952-226-6651 or [www.bethesdachurch.com](http://www.bethesdachurch.com)

**DID YOU KNOW THAT THERE IS A BETHESDA THRIFT SHOP** at 1550 White Bear Avenue? Phone number is 651-793-6352. This thrift shop is named “Dress for Less” and is located about a mile south of Hwy. 36 on White Bear Avenue. All profits go to Bethesda Lutheran Homes. “Dress for Less” sells jewelry, quality clothing, household goods and appliances, books, toys and one of a kind items. The store is open Monday – Saturday, 10:00 a.m. – 4:00 p.m. for shopping and to accept donations. Additional information can be found in the kiosks located near the library and the west entrance. If you would like to donate items but do not have a way to get them to the store, call Kay Kinzie (651-633-1643) or Shirley & Marty Hoeft (651-486-9222) and since we volunteer there, we may be able to take them for you

**SINGLES EVENT – DRIVE-IN MOVIE NIGHT:** Come join other LCMS Singles for an evening of tailgating and movie watching at the Vali-High Drive-In Movie Theater on September 5<sup>th</sup>.beginning at 7 p.m. For more information or to arrange carpooling, please contact John Strom at (952) 544-0985 or [stromjr@netzero.com](mailto:stromjr@netzero.com) or Pam Buth at 651-324-6488 or [mngreeneyes@gmail.com](mailto:mngreeneyes@gmail.com).



## VALLEYFAIR COUPONS

are available on the bulletin board by the donation area. Please feel free to take what you need throughout the summer (or until they are gone). Have fun!

**Messiah Lutheran Church**  
2848 County Road H2 - Mounds View, MN 55112  
(763)784-1786 - [www.messiah-lutheran.org](http://www.messiah-lutheran.org)

## WEEK AT A GLANCE: AUGUST 1 – AUGUST 7, 2010

If you would like a printed version of our service today, copies are available on the table as you enter the Worship Center or you may ask one of the ushers for a copy.

### TODAY:

**7:30, 8:30 & 11:00 AM**      **Worship Service** - \* Communion Service  
**9:45 AM**      Education Hour

### MONDAY:

**6:30 PM**      Stephen Ministers (Cont. Ed.)  
**7:00 PM**      LC (Shepherding)  
**7:30 PM**      Stephen Ministers (Supervision)

### TUESDAY:

**9:00 AM**      Tuesday Morning Work Crew  
**1:30 PM**      Program Staff Meeting  
**7:30 PM**      AA

### WEDNESDAY:

**9:45 AM**      Messiah Seniors  
**6:00 PM**      Senior Youth

### THURSDAY:

**2:00 PM**      Cribbage  
**7:00 PM**      Couples Bible Study/STEP Parenting Class

### FRIDAY:

**6:00 AM**      Men’s Bible Study at RJ Riches

### SATURDAY:

**TODAY'S ORDER OF WORSHIP**

**7:30\* & 8:30 SERVICES**

**BOTH SERVICES DISPLAYED ON POWER POINT SCREEN**

**Opening Hymn: "Renew Me, O Eternal Light" # 704**

**Old Testament Reading: Ecclesiastes 1:2, 12-14; 2:18-26**

**New Testament Reading: Colossians 3:1-11**

**Gospel Reading: Luke 12:13-21**

**Offering Hymn: "Gracious God, You Send Great Blessings" # 782**

**Sermon: "Am I Content?" Luke 12:13-21**

**Closing Hymn: "Praise the Almighty, My Soul, Adore Him" # 797**

**7:30 Communion Hymns**

**"All Depends on Our Possessing" # 732**

**"What Is the World to Me" # 730**

**11:00\* SERVICE**

**Old Testament Reading: Ecclesiastes 1:2, 12-14; 2:18-26**

**New Testament Reading: Colossians 3:1-11**

**Gospel Reading: Luke 12:13-21**

**Sermon: "Am I Content?" Luke 12:13-21**

**THOSE SERVING YOU TODAY:**

**7:30\*, 8:30, & 11:00\* Services:**

**Worship Proclaimer & Leader:** Pastor Richard Krogen  
**Organist:** Kay A. Knutson  
**Ushers:** 7:30 Jon S  
8:30 Bill K, Dave K,  
Jon K, Henry M  
11:00 Sharon E, Rod R, Bruce S

**Worship Assistants:**  
7:30 Ed R 8:30 Jerry S 11:00 Carl S

**Readers:** 7:30 Roleene R 8:30 Lowell B 11:00 Brady B

**Greeters for August 1:**  
7:30 Gerald & Grace G 8:30 John & Jackie W – Jeff G  
11:00 Matt & Candace J – Jan S

**Greeters for August 8:**  
7:30 Ken & Rosanne J 8:30 Lowell & Audrey B – Judy A  
11:00 Tom & Debbie L – Bev T

**Communion Assistants for the Month:**  
7:30 Lloyd K 8:30 Dave K 11:00 Lynn & Rod R

**Welcome Center:**  
7:15 – 7:30 John & Nanci M 8:20 – 8:40 Ron & Carol S  
9:25 – 9:50 Sarah B 10:45 – 11:00 Rich & Sharon L  
12:00 – 12:15 Nancy C

## Life Quote

“The Good News of a crucified and living Savior does not trivialize human struggles—the struggles of women, of problem pregnancies, of difficult situations. It speaks to them! The Good News defeated death and brings real love and compassion and neighborliness to bear in dealing with human struggles in very personal and practical ways.  
Life, not death, is our source of help and hope.”

*Rev. Dr. James I. Lamb, Executive Director of Lutherans For Life*

This “Life Quote” is from Lutherans For Life – [www.lutheransforlife.org](http://www.lutheransforlife.org).



## MARK YOUR CALENDAR

The 2nd annual ***Hands ON!*** event will be held  
**Wednesday, August 18**  
**5:00-7:00pm**

with Merlajean Garten and her Parading Puppets and plenty of fun puppet and instrument crafts...Registration information and leaders of all

of our fall children's programs will also be there. *Don't miss the FUN!*

**MESSIAH BOOK CLUB** will **NOT** meet in August. The next meeting will be September 16. The selected book will be announced at a later date.

## Sunday School Teachers:

A mandatory meeting for all Sunday School teachers is scheduled for **Monday, August 16** at **7:00pm**. We will be distributing the NEW curriculum, sharing our goals for the year, explaining changes to our schedule and

discussing in-class strategies and methods. This will be a valuable time spent together preparing for the important ministry we do at Messiah. We look forward to our time together!



## News & Notes – August 1, 2010

Welcome friends! We're glad you're here today. Whether you are a long-time member or a first-time visitor, please be sure to indicate so on one of the blue cards found in your bulletin. Please turn your blue card in during the time of the offerings. Visitors, please stop by the Welcome Center in the Gathering Space for your gift.

- **Directional Signage** is located throughout the building suspended from the ceilings. If you aren't sure which way to go, look UP!
- **THE NURSERY** is available for parents and their children three years of age and younger and is located in the hallway across from the rear of the Sanctuary.
- **Busy Bags** are filled with quiet activities for your children to use during the service. They can be found in the entryway of the Gathering Space. The busy bags and their contents can be returned to the Gathering Space after the service.
- The **Welcome Center** is located right outside the Worship Center and is filled with information about Messiah and its many activities. Feel free to ask the volunteer any questions you may have.
- **Restrooms** are on the south side of the Gathering Space.
- If you would like to receive **Holy Communion** and are unable to approach the Communion Rail, please talk to one of the worship assistants or an usher before the service and they will assist you.
- **FM 88.1** Are you experiencing difficulty hearing during the worship service? Try listening to the worship service on a FM radio tuned to 88.1 FM. We encourage you to bring a good quality FM radio with high quality ear buds, and then listen direct to the pastor and music without the distractions. FM radios are also available at the welcome center.

**LEADING OUR WORSHIP** this morning is **Pastor Richard Krogen**. **Messiah's Public Worship** is currently conducted and the Word proclaimed by three worship leaders, **Pastor Richard Krogen, Pastor Del Wippich** and **Pastor Philemon Ngare**. All are members of Messiah and share the public worship duties. **Kay Knutson** is our Director of Music and plans our Order of Worship. **JoElla Kath** is our church secretary and prepares our bulletin and News and Notes.

## SENIOR PASTOR UPDATE

As was announced last Sunday, Pastor Kurt Klaus has accepted the call to Messiah to be our Senior Pastor! Pastor Klaus is coming to us from Child of God Lutheran Church and School in St. Peter, MO. where he was the sole Pastor. Pastor Klaus's installation as our Senior Pastor will be on Sunday, August 29<sup>th</sup>, at 2:00 P.M.



## Sunday Morning Adult Education Class Schedule

	<b>9:45am</b>
	<b>Room #210</b>
<b>8/1</b>	<b>Through the Bible</b>
<b>8/8</b>	<b>Through the Bible</b>

**JOIN US IN READING THROUGH THE BIBLE** - and get to know the Creator of the universe who is both terrifyingly powerful and gloriously holy. He wrote the book with the specific purpose of introducing you to his character, plans, and purposes. This terrifyingly powerful Lord who sits enthroned above the circle of the earth and looks down on people as if they were grasshoppers, who measured out the waters of the earth in the hollow of his hand and who brings princes to naught, is the same Lord who tends his flock like a shepherd, gathers the lambs into his arms, quiets them with his love and rejoices over them with singing (Isaiah 40:11, 12, 22, 23; Zephaniah 3:17, NIV). It's okay if you don't understand everything you read. The Holy Spirit will make sure that you understand enough to be in awe of his glorious holiness!

Discussion today, Sunday, August 1: Romans 3, Psalm 37-56)

Week of August 1- 7 (Discussion Sunday, August 8: Psalms 57-73, Romans 4-9:15)

Sun: Psalms 57-59, Romans 4

Mon: Psalms 60-62, Romans 5

Tues: Psalms 63-65, Romans 6

Wed: Psalms 66-67, Romans 7

Thurs: Psalms 68-69, Romans 8:1-21

Fri: Psalms 70-71, Romans 8:22-39

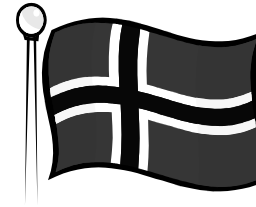
Sat: Psalm 72-73, Romans 9:1-15

**FINANCIAL STATEMENTS** for the first half of 2010 are available on the table by the Welcome Center.

**MITE BOX COLLECTION IS TODAY!** Leave your Mite Boxes (and any loose change) the giant mite boxes located near the west entrance and in the Crossroads Area.

**STEPHEN MINISTERS**, we meet on August 2 at 6:30 for continuing education and 7:30 for supervision. Ev has devotions and Linda S has snack for this meeting. Hope to see you there.

**AUGUST 4 MESSIAH SENIORS CLUB, 9:45 A.M.** Join us for an indoor picnic. Wieners and buns will be furnished. Bring a side dish. The program: A speaker will talk to us about planning the physical and financial arrangements that need to be made to obtain a cemetery plot. Come and join us.



**AN INSPIRING ADVENTURE TO NORWAY** - Registrations are now being accepted for a June 2011 trip to magnificent Norway, a land of mountains, fjords, thriving cities and picturesque villages. Pastor Bruce and Ann Frederickson invite you to join an exciting trip featuring all of these and more! Descriptive folders, complete with registration information are available here at church. Contact the Fredericksons if you would like more information [BruceF6300@comcast.net](mailto:BruceF6300@comcast.net) 763.786.2723.



**WE WILL BE COLLECTING SCHOOL SUPPLIES** again this year for area children. You can start watching for great sales and stocking up! Items may be put in the donation area. Thanks.

**YOU CAN HELP US THANK OUR ADVERTISERS** by mentioning to them **where** you saw their advertisement. Did you know that their advertising dollars are instrumental in helping us cut the cost of printing for our monthly newsletter and annual phone directories? Our newsletters and phone directories are currently being printed offsite. These advertisers help us by using a portion of their advertising dollars to reach people in specific markets such as our membership. The ads are located on the last page of the monthly newsletter and throughout the directory. This week we are featuring:

### **Acapulco Restaurante Mexicano**

1113 Silver Lake Rd  
New Brighton, MN 55112

**PLUS** – cut out the coupon from your August newsletter and save 10%

### **Wildwood Manor**

A unique retirement community  
2559 Mounds View Dr  
Mounds View, MN 55112

**Physical Healing at Home:**

Thank You to  
**Our Advertisers**

Prince of Peace Academy is accepting registrations for Kindergarten through 8th grade from the 2010/2011 school year. Applications can be found on the school website at [www.princeofpeaceacademy.org](http://www.princeofpeaceacademy.org)

**BAZAAR PROCEEDS:** Please fill out and place your request for Bazaar Proceeds in the Suggestion Box in the church office. Suggestion forms are available in the box. Proceeds will be distributed one-half for Missions and one-half for Messiah needs. **DEADLINE IS SEPTEMBER 5.**

**VOLUNTEERS NEEDED:** WOM is again planning for the 5th year to help CEAP (Community Emergency Assistance Program) in Anoka County with Back to School Days on Wednesday, August 25 from 9:00 -1:00 at Christ Lutheran Church, 641 - 89th Avenue, Blaine. We are asking for volunteers to help sort, put school supplies in order and fill school bags for distribution. Last year was a record number of children who received school bags. I have been told families are already signing up which is sooner than other years. The estimated cost of this program is \$35.00 per child and this is reached through donations.

Please consider volunteering for this worthwhile project. Sign up on the bulletin board by the elevator. If you would like to donate school supplies, they will be more than welcomed. Each year we run short of kleenex, red pens, highlighters, erasers and glue sticks. Please drop your donation off in the box by the offices. Thanks.



**VOLUNTEERS NEEDED ON AUGUST 18** If you can help children at a craft table or prep and serve hotdogs, please sign-up on the sheet located next to the elevator on the "Events" board. It is lots of fun! Many thanks.

**FOOD SHELF DONATIONS** – Thanks to your generous donations, we were able to donate 164 pounds of non-perishable items to the CEAP Food Shelf, and \$210 to the CEAP Food Shelf. This month we will be collecting non-perishable food items for the Ralph Reeder Food Shelf, which serves families in Ramsey County. The items they are in need of are:

Canned peaches, pears, applesauce, fruit cocktail	Mayo
Canned corn, peas, green greens	Mustard
Ketchup	Chili
Spaghetios with meat	Stew
Flour, sugar, oil	Baked Beans
Hamburger/Tuna Helper	Dried red beans
Dessert mixes	Pudding/jello
Snack Items: crackers, chips, cookies, granola bars	Toilet Paper
Shampoo	Toothpaste
Laundry detergent	Dishwasher detergent
Diapers – size 5 and 6	Baby Wipes
School Supply Items: backpacks, pocket folders, notebooks, markers, colored pencils	

Please leave your donation in the bins located near the southwest entrance. You can also donate by indicating "Food Shelf" on your offering envelope. Thanks!

**Sweet, noisy, quiet, funny, boisterous, cute, sticky, silly children – who are loved by God – still need YOU!** Praise God! The Sunday School is mostly staffed for the coming year, but we are still in need of A CO-TEACHER for the 4-year-old class and A SHEPHERD for the 2-5<sup>th</sup> graders. If God is laying this need on your heart, will you please prayerfully consider the call? The job rewards are *priceless!* Contact Allison at church or Mary or Mike if you have questions or to accept the call!

**Knollwood Drive update # 6:**

The Knollwood Drive street grade has been revised; most of the new curb and drive way aprons should be installed or will be next week. For the week only one driveway entrance to Luther Hall and to Messiah's lower parking lot will be available. The following week the remaining two driveways will be poured. The driveway to the front door will have generous radiuses in response to the many complaints we received about the original driveway design. If the access to our parking lot looks too crude, please use the north (H2) driveway entrance. **Please be careful as you come and depart**, always watch for construction workers and obstructions. Expect changes daily. Thank you for your patience and your continued participation in the many activities and worship services during this project. For questions, ask any of the Tuesday Crew.

*The Tuesday Crew*

Prince of Peace Academy is a Christian school located on the campus of Messiah Lutheran Church in Mounds View, Minnesota. We offer a quality education in a Christian environment to children in kindergarten through eighth grade. Your child or grandchild will benefit from our small class sizes, personal attention to the educational needs of individual students, a wide range of educational outings, academic Enrichment Units, dedicated teachers, sports, extended care hours and the joy of inviting God into the classroom. Registration Day and Open House will be held on Wednesday, August 18th from 5 p.m. to 7 p.m. in conjunction with Messiah Lutheran Church's "Hands On" event.

For more information, please call us at 763-231-0930, email us at [info@princeofpeaceacademy.org](mailto:info@princeofpeaceacademy.org), or visit our website [www.princeofpeaceacademy.org](http://www.princeofpeaceacademy.org).

**THANK YOU** Messiah for your donation of the large variety of bottles and cans for the 'Hands-On' event. We have received a sufficient amount of bottles and cans to cover our needs but still could use other items for the event. If you would like to donate any of the items listed below please place them in the bin by the West door, marked: 'Hands-On'. If you would like to donate food items for the event, we ask that you drop off the items just prior to the August 18<sup>th</sup> date. Please mark your donation 'Hands-On', and place them in the kitchen.

**DRY ITEMS STILL NEEDED:**

- **Dry beans**
- **Dry rice**
- **Beads – any size or color**
- **Dry noodles**
- **Ribbons**
- **Contact paper**
- **Stickers**
- **Toilet paper/paper roll tubes**
- **Paper plates**
- **Paper bags (sandwich size)**

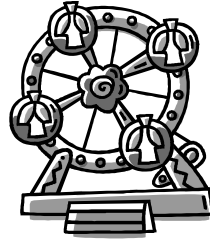
**FOOD ITEMS STILL NEEDED:**

- **Potato chips**
- **Hot dog buns**
- **Wieners**
- **Bars/cookies**
- **Lemonade**
- **Napkins**

**OFFERINGS: General Fund: \$9,325 Mortgage Fund: \$3,275 Missions: \$40 (5.0% of General Fund) \$466** Weekly Fund Needs: \$12,355 Weekly Mortgage Fund Needs: \$4,053

**ATTENDANCE: Sunday: 315**

**GOOD DEEDS SERVED UP ON A STICK!** Camp Omega will once again receive all proceeds from the ChinaTown USA restaurant at the State Fair. Volunteer workers from Messiah are needed to staff the restaurant on Saturday, September 4th, 3:00 - 11:00. Free day pass to the Fair is included. Please contact Rob S if you can help. No skills necessary.



## **The Good Neighbor Back to School Project Needs Your Help!**

Organized by Ralph R. Reeder Food Shelf, supported by Love INC  
(a program of Mounds View Public Schools)

Every child should have adequate school supplies to start the new school year off right. However, not all families in our community can afford them. The Good Neighbor Back to School Project helps needy children in our community obtain the necessary school supplies to be successful in school. Last year the program served 588 children. Please consider making a donation. Your help is greatly appreciated!

Items especially needed include: backpacks, pocket folders, wide-lined notebooks, wide-line washable markers, colored pencils, compasses, protractors, pencils, erasers, glue sticks, \$10.00 Target gift certificates.

Donations needed by Friday, August 27. Drop off hours: Monday through Thursday, 9:00 a.m. – 2:00 p.m. or Fridays, 9:00 a.m. – 11:30 a.m. or by appointment.

If you know of a child who is in need of school supplies, please have them call the food shelf at 651-621-7451 for more information.

Thank you very much!  
Ralph Reeder Food Shelf  
Pike Lake Education Center  
2101 NW 14<sup>th</sup> Street  
New Brighton, MN 55112



# AUGUST